

Category <b>T</b>	<b>Technical</b>	Ref. No. E012/03	Page 1 of 5
Coverage <input type="checkbox"/> Distributor only <input checked="" type="checkbox"/> Please inform your dealers		Date Issued September 22, 2003	
Please convey this information to your <input type="checkbox"/> Director <input checked="" type="checkbox"/> General Manager <input checked="" type="checkbox"/> Warranty Dept. <input checked="" type="checkbox"/> Parts Dept. <input checked="" type="checkbox"/> Training Dept. <input checked="" type="checkbox"/> Field Rep.			
Applicable Model  Mazda3 (BK)		Applicable Countries or Specifications  Worldwide	

## **Subject: Adjustment Procedure for Remaining Distance Indication of Driving Information System (DIS) – Trip Computer**

### DESCRIPTION

To change the setting of remaining distance indication for Driving Information System (DIS), the display interval adjustment procedure by WDS is now available.

Originally the remaining distance indication is set so that it will not change so busily.

If a customer requests for a shorter display change interval than the original setting, please use the following procedure to change the setting.

### SETTING OF DISPLAY CHANGE INTERVAL

Basically the remaining distance indication changes every 1 km, but it may vary depending on a driving mode (whether the vehicle is running or at idle).

The display change interval can be selected from the following 16 types of settings.

The shorter the display change interval becomes, the quicker the remaining distance indication changes especially on an uphill road.

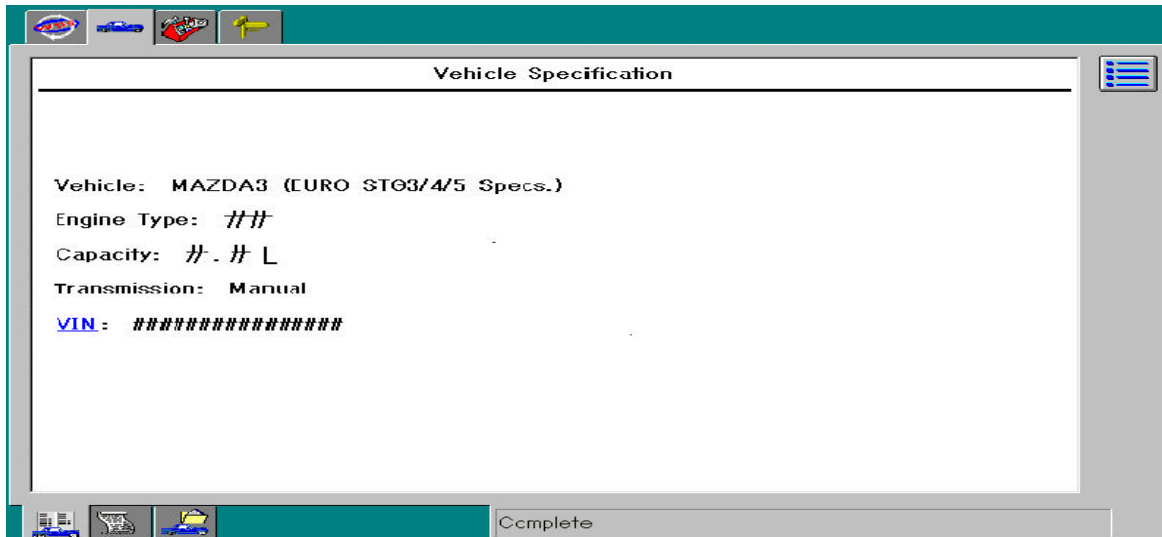
Minimum Time of Display Change Interval (s/km)
23.8 (*)
20.5
17.9
15.9
14.3
13.0
11.9
11.0
10.2
9.5
8.9
8.4
7.9
7.5
7.1
6.8

(\*) 23.8 is the original setting for Mazda3 (BK).

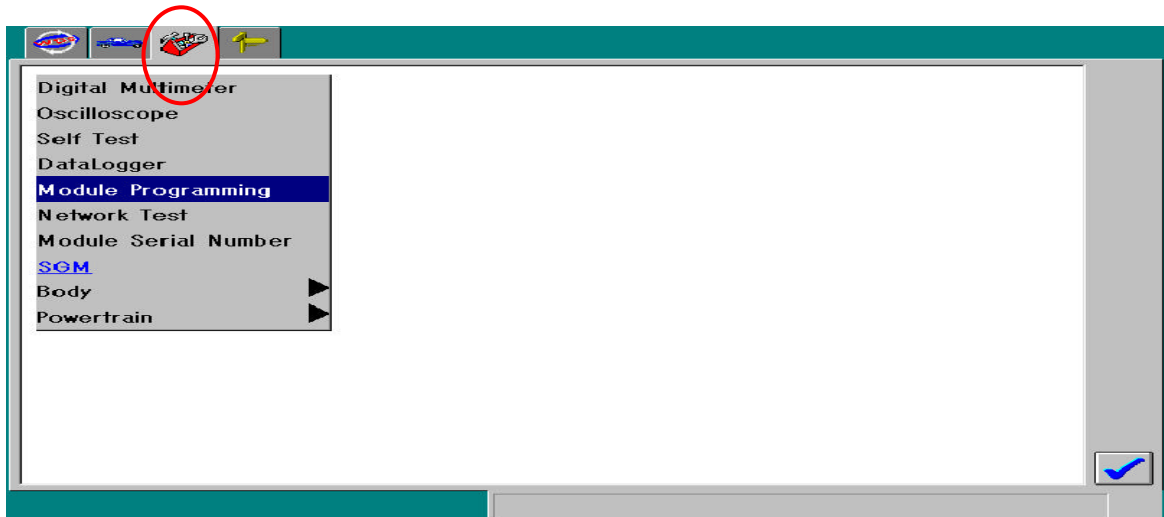
## ADJUSTMENT PROCEDURE

Using WDS version 26 or higher, partially change the trip computer's configuration data according to the following procedure.

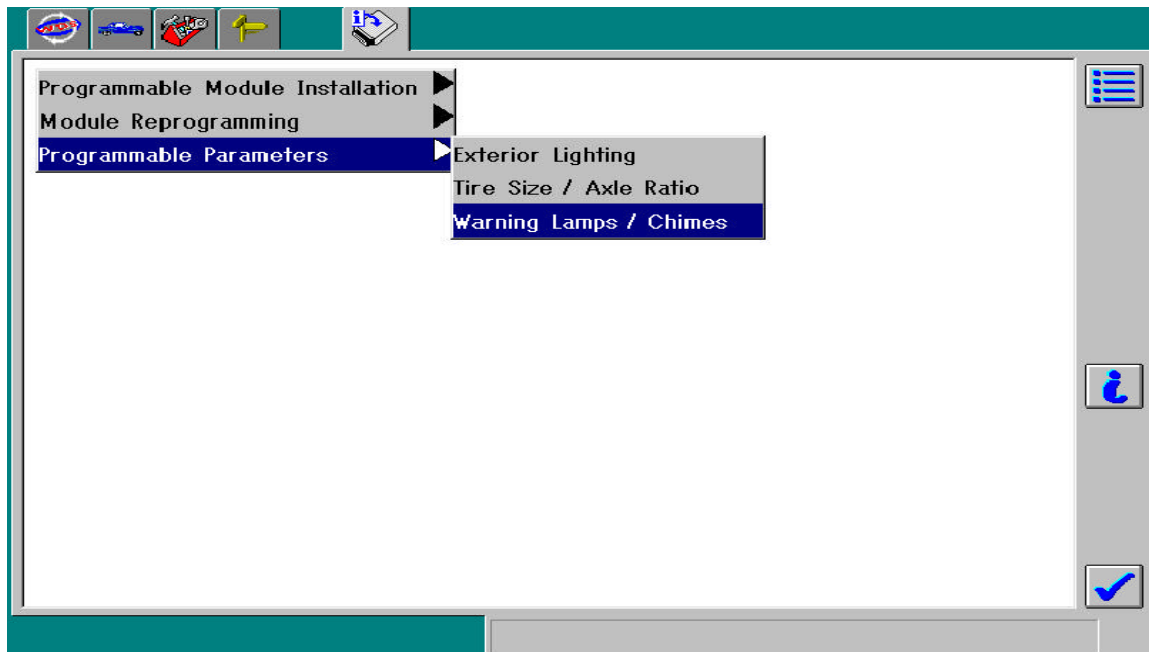
1. Confirm the specification of the vehicle.



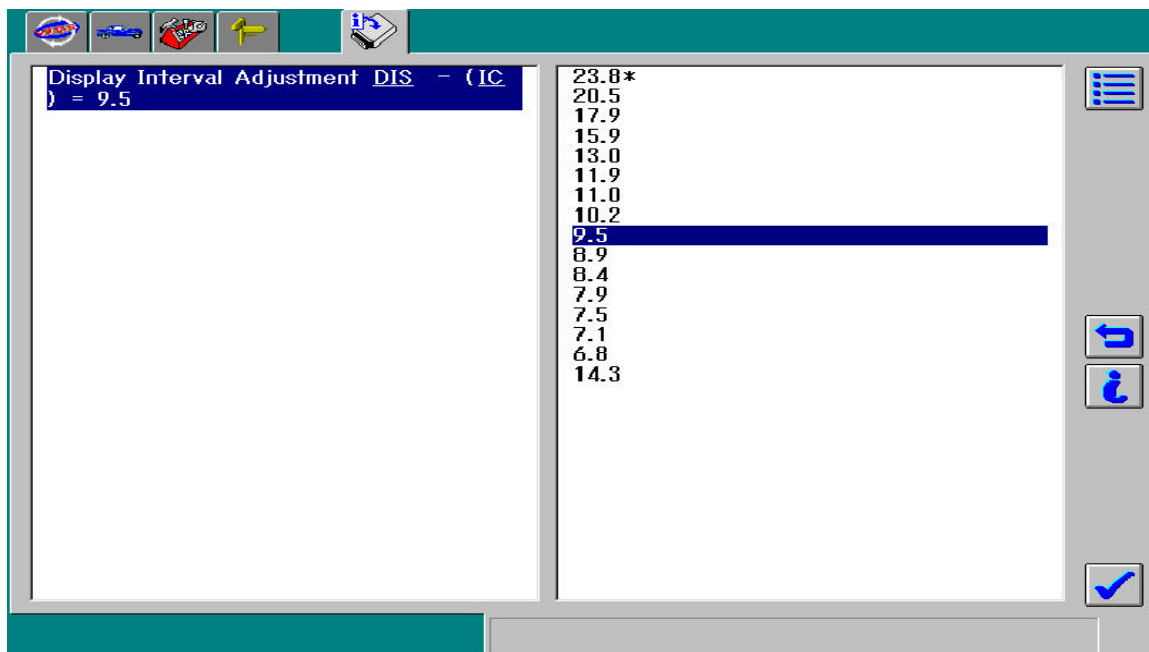
2. Select "Module Programming".



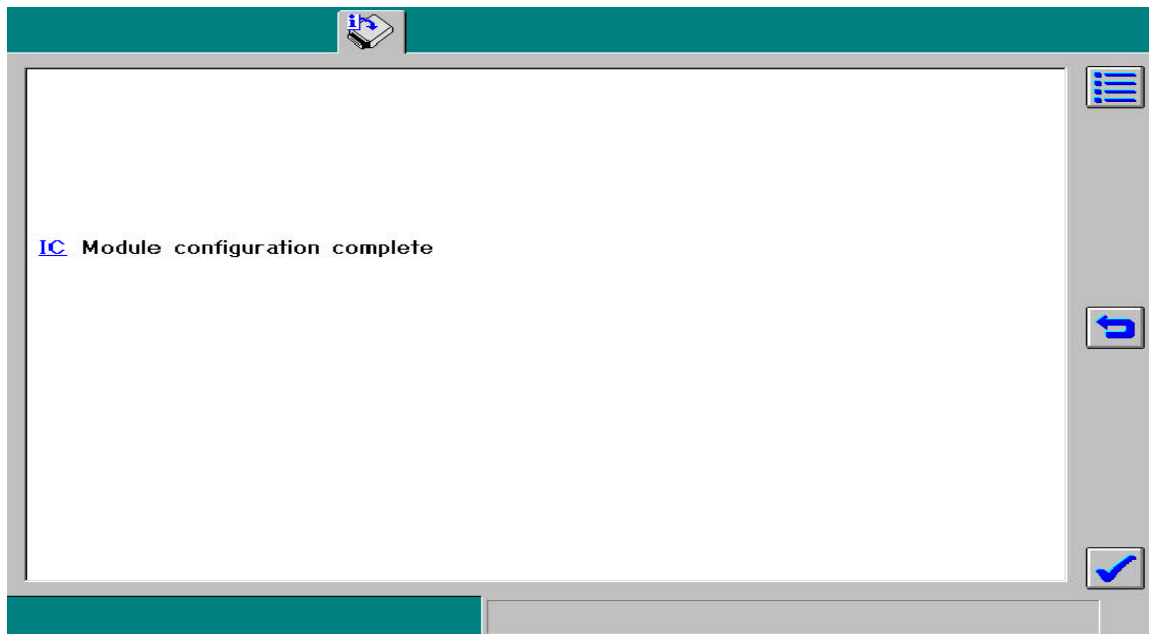
3. Select "Programmable Parameters", then "Warning Lamps / Chimes".



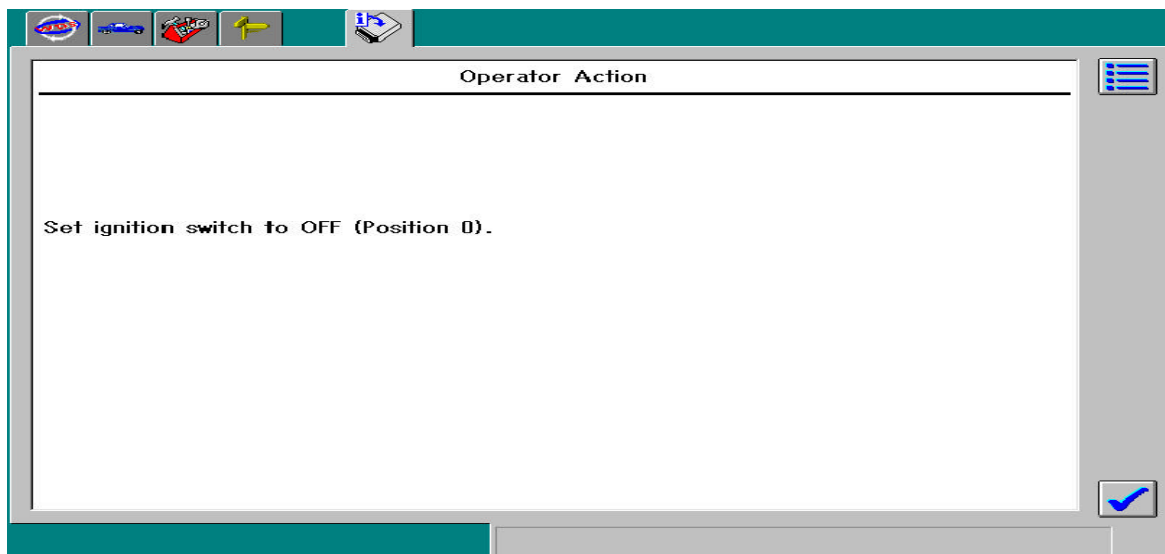
4. Select a display interval time that you would like to change to.  
Note: The current setting is indicated with "\*" .



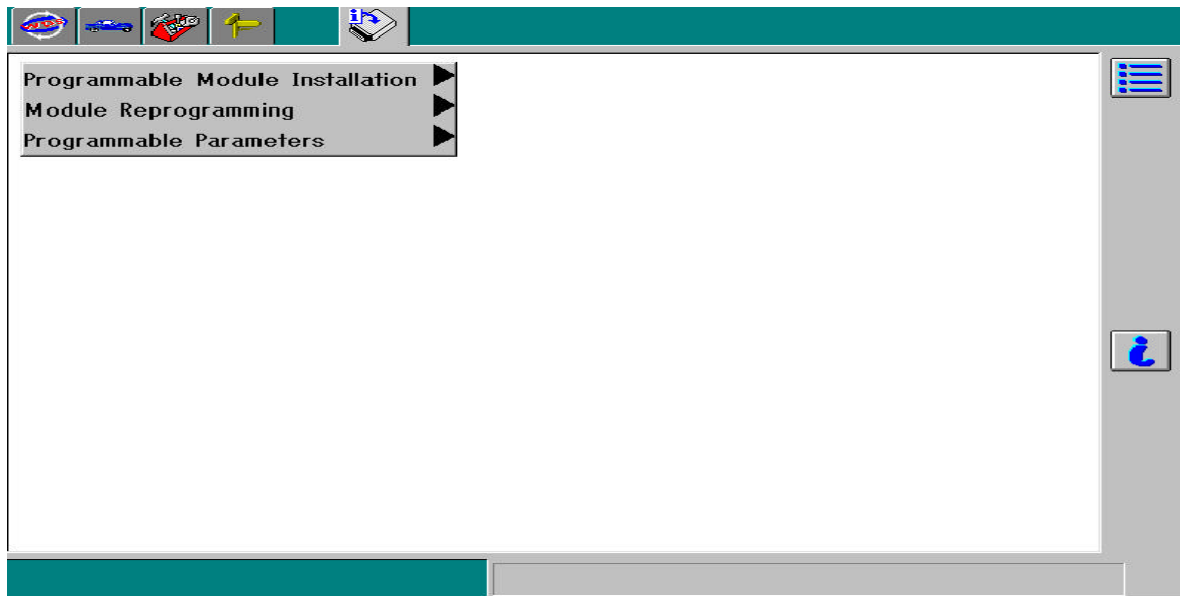
5. Confirm that "Module configuration complete" is on the screen, then go to next step.



6. As per the instruction on the screen, set the ignition switch to OFF (Position 0).



7. This is the end of the adjustment procedure.



Fumihiko Aoyama  
General Manager  
Technical Service Dept.  
Mazda Motor Corporation