

INTRODUCTION TO M-MDS

06 - Making DataLogger Recordings

Activity 06: Making DataLogger Recordings

Upon completing this activity you will be able use to M-MDS to create a Data Logger recording and then play it back.

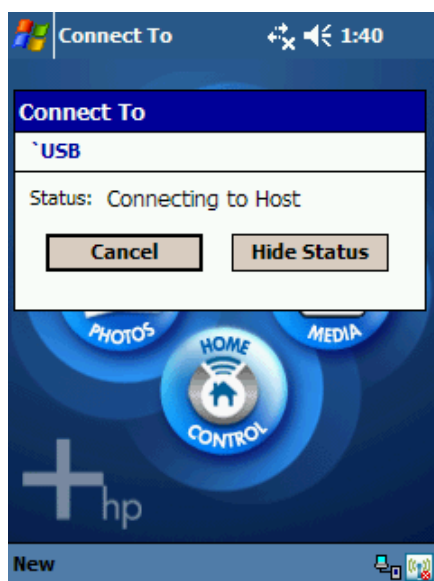
What you need to complete this activity:

- A current Mazda vehicle with Electronic Throttle Control
- Mazda-approved PDA with PDS installed
- VCM

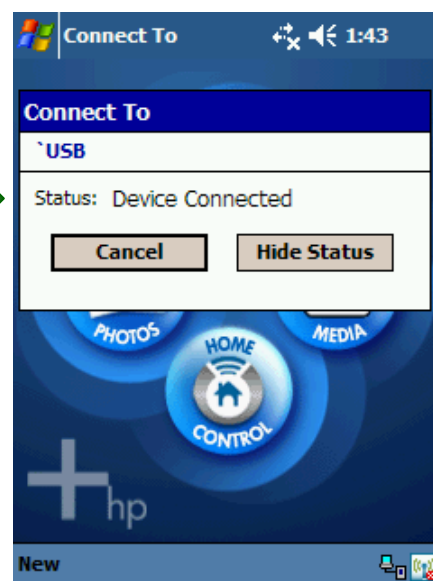
Procedure:

1. Connect the M-MDS data cable to DLC 2 under the dash. The PDA will turn on automatically.

Three USB pop-up messages quickly flash on and off the PDA. You may not see the first two messages:



USB message 1



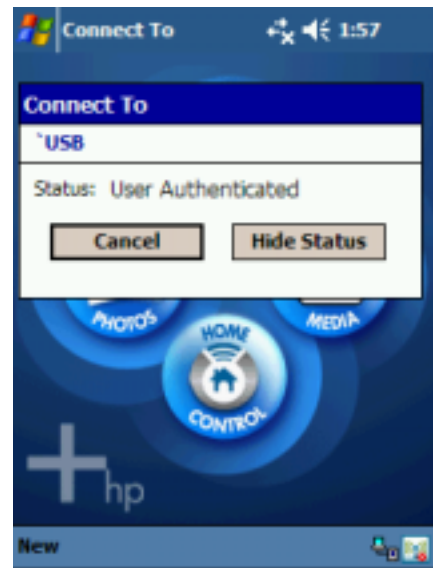
USB message 2

INTRODUCTION TO M-MDS

06 - Making DataLogger Recordings

Activity 06 (Continued)

The third message, "Status: User Authenticated," is the most important message.



USB message 3

2. Tap **Start** on the main screen.



Your PDA's main screen may look slightly different than this example.

3. Tap **PDS** on the drop-down menu.

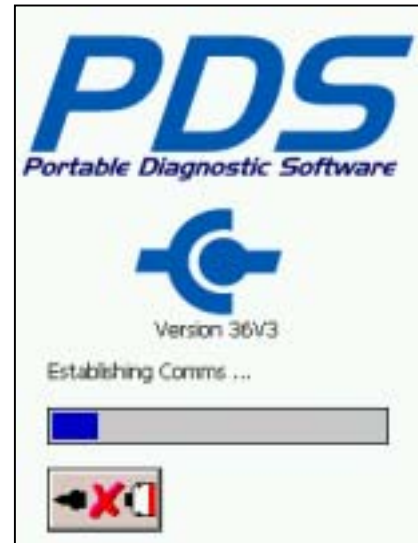


INTRODUCTION TO M-MDS

06 - Making DataLogger Recordings

Activity 06 (Continued)

- The PDS Establishing Communications screen flashes on then off. This screen indicates the PDA is connecting to the VCM via the USB network.



- Tap the  **New Vehicle** icon.



- Select **16 pin**, then tap tick.



INTRODUCTION TO M-MDS


06 - Making DataLogger Recordings

Activity 06 (Continued)





- Turn the ignition key to Key On Engine Off (KOEO), then tap tick.

CAUTION


If you do not turn the ignition key ON, you will need to perform a soft reset on your PDA and reboot the VCM.



- **WARNING:** To avoid possible injury, place the PDS in the vehicle so that it does not interfere with the safe operation of the vehicle. Do not place the PDS in the deployment path of any airbag and secure all cables away from the vehicle pedals and controls.
- Make connections as shown
- Set ignition switch to ON (Position II).
- Apply the parking brake.
- Apply Neutral/Park gear position


- Watch the following Establishing Communication screen flash on then off.




Establishing communication to **PCM**

0s 45s

Operation in progress




- Verify the vehicle information is correct, and then tap **YES**.



Vehicle Specification

Vehicle: MAZDA6 (North America / General)
 Engine Type: AJ
 Capacity: 3.0L
 Transmission: Automatic
 Fuel Type: Gasoline
 Emission level: California or Green State US Emission
 Is this correct?



NO
YES

INTRODUCTION TO M-MDS

06 - Making DataLogger Recordings

Activity 06

(Continued)

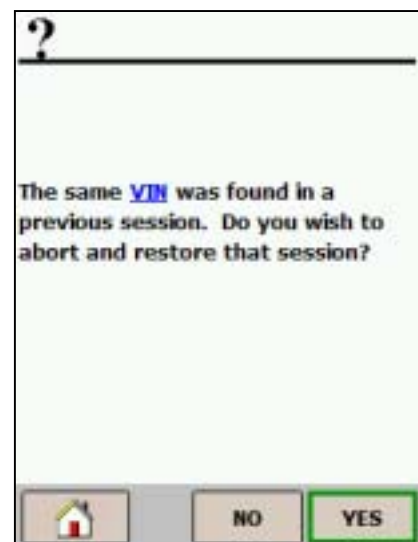
- If desired, leave the fields empty or tap data into any of the fields, then tap tick.

NOTE

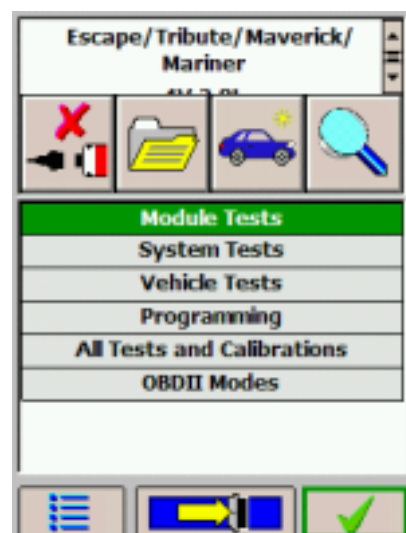
This is an optional screen and you may not see it.



- If this screen displays, tap **NO**.



- Tap **Module Tests** if it is not highlighted, then tap tick.

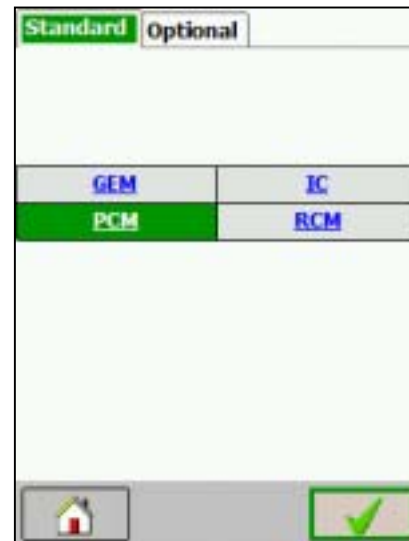


INTRODUCTION TO M-MDS

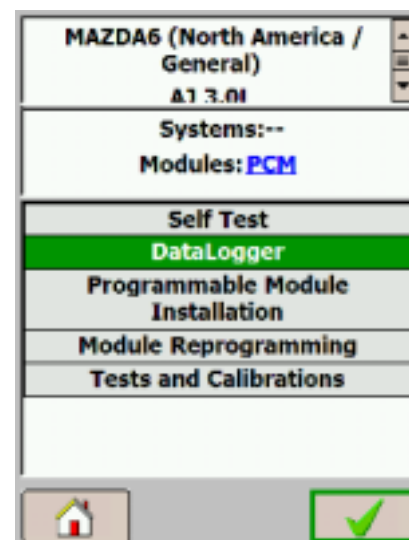
06 - Making DataLogger Recordings

Activity 06 (Continued)

13. Tap tick.



14. Tap **Data Logger**, then tap tick.




15. This screen flashes on then off.



INTRODUCTION TO M-MDS

06 - Making DataLogger Recordings

Activity 06 (Continued)

16. Tap  **Clear** to clear preselected PIDs. Use the scroll bar on the right to view all available PIDs.

17. Select the following PIDs, then tap tick:

- APP1 (VOLT)
- APP2 (VOLT)
- TP1 (VOLT)
- TP2 (VOLT)


AC_REQ (MODE)	ALTF (PER)
ALTF # (MODE)	ALTT V (VOLT)
APP (PER)	APP1 (PER)
APP1 (VOLT)	APP2 (PER)
APP2 (VOLT)	ARPMDES # (RPM)
B+ (VOLT)	BARO (PRESS)
BARO (VOLT)	BARO/EGR # (MODE)
BOO (MODE)	BPA (MODE)
CATT11_DSD (TEMP)	CATT21_DSD (TEMP)

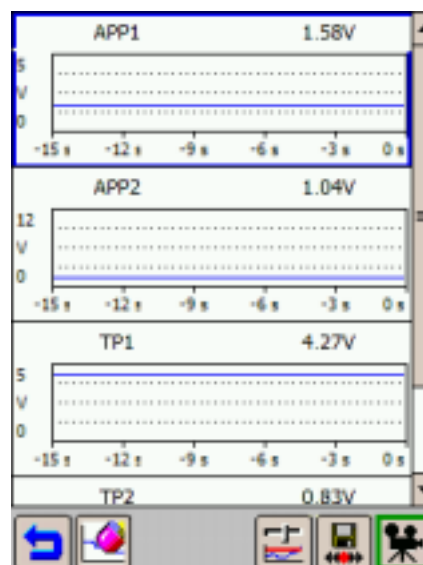
SHRTFT1 (PER)	SHRTFT11 (PER)
SHRTFT12 (PER)	SHRTFT2 (PER)
SHRTFT21 (PER)	SHRTFT22 (PER)
SPARKADV (ANGL)	test # (MODE)
TIRESIZE (NUM)	TP REL (PER)
TP1 (PER)	TP1 (VOLT)
TP2 (PER)	TP2 (VOLT)
TPCT (VOLT)	VSS (SPD)
VT ACT1 (ANGL)	VT ACT2 (ANGL)

You are now in the active PID display. Use the scroll bar on the right to view all available PIDs as needed.

18. Slowly move the vehicle's accelerator pedal from idle to wide open and then back to idle.

19. Immediately after releasing the accelerator pedal

tap  **Data Capture** to record the data.

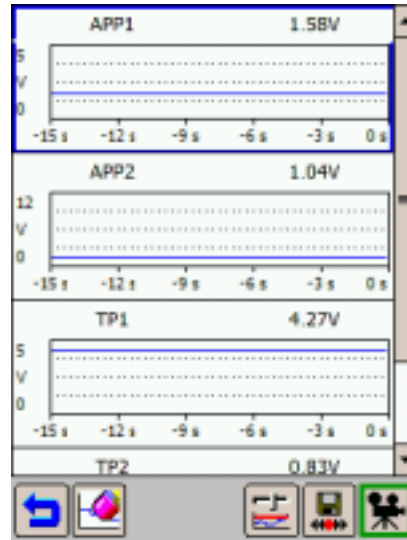


INTRODUCTION TO M-MDS

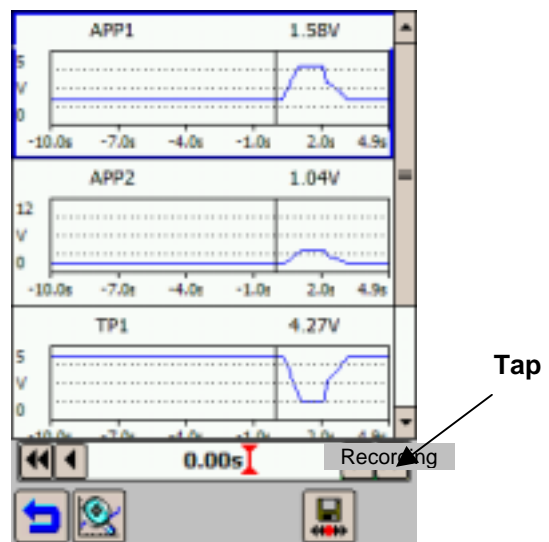
06 - Making DataLogger Recordings

Activity 06 (Continued)

19. Tap  **Playback.**



20. Tap the recording pop-up data that appears in the lower right corner.



INTRODUCTION TO M-MDS

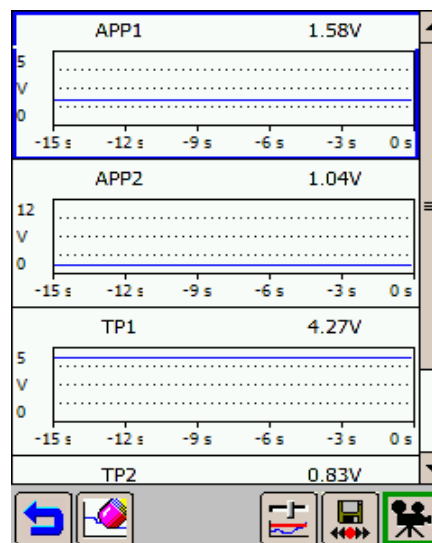
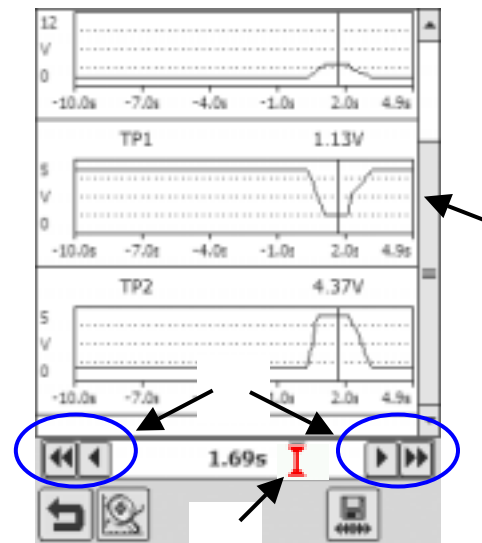
06 - Making DataLogger Recordings

Activity 06 (Continued)

21. Your recording should look similar to this screen.

You can scroll through the recording to view the PIDs, as needed, using any of the following three methods:

- Tap the left and right arrows at the bottom of the recording. (A)
- Tap the stylus on the red vertical bar at the bottom of the recording, then drag the bar right or left with the stylus. (B)
- Tap the scroll bar on the right, then drag the bar up or down with the stylus. (C)



Answer the following questions from the recording you just made:

What was the APP1 voltage at idle? _____

What was the APP2 voltage at wide open throttle? _____

What was the TP1 voltage at idle? _____

What was the TP2 voltage at wide open throttle? _____

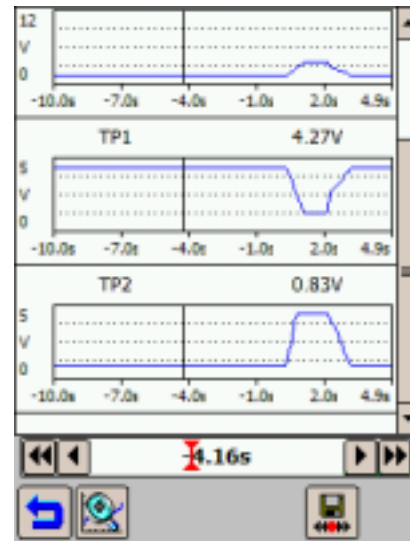
What was the total recording length? _____

INTRODUCTION TO M-MDS

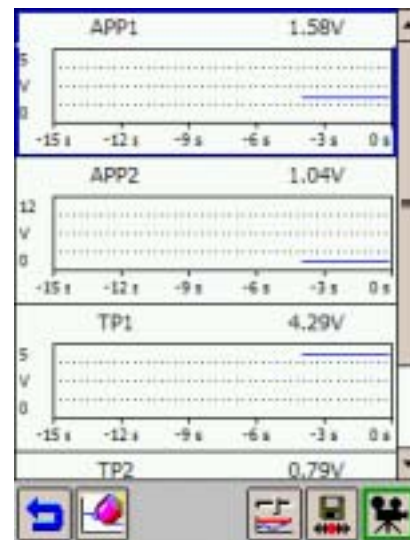
06 - Making DataLogger Recordings

Activity 06 (Continued)

22. Tap Go to Previous Screen.



23. Tap Go to Previous Screen again.



24. Tap Go to Previous Screen one more time.

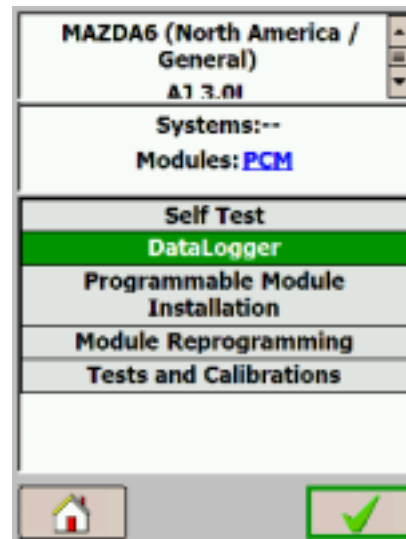
SHRTFT1 (PER)	SHRTFT11 (PER)
SHRTFT12 (PER)	SHRTFT2 (PER)
SHRTFT21 (PER)	SHRTFT22 (PER)
SPARKADV (ANGL)	test # (MODE)
TIRE SIZE (NUM)	TP REL (PER)
TP1 (PER)	TP1 (VOLT)
TP2 (PER)	TP2 (VOLT)
TPCT (VOLT)	VSS (SPD)
VT ACT1 (CANCE)	VT ACT2 (CANCE)

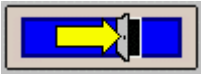
INTRODUCTION TO M-MDS

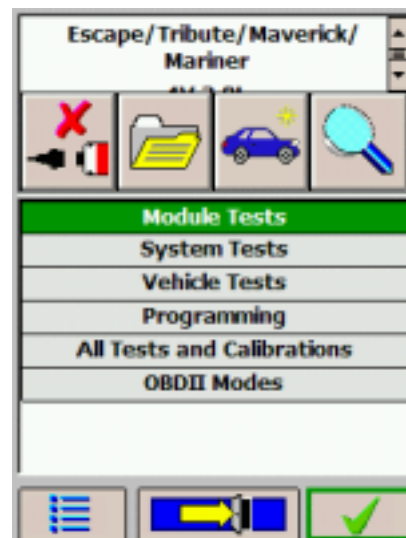
06 - Making DataLogger Recordings

Activity 06 (Continued)

25. Tap  **Go to Previous Screen.**



26. Tap  **Exit PDS.**



The main screen displays:



Your PDA's main screen will look slightly different than this example.

INTRODUCTION TO M-MDS

06 - Making DataLogger Recordings

Activity 06 (Continued)

27. Turn the ignition key OFF.
28. Disconnect PDS from the vehicle.
29. Turn OFF the PDA.

Conclusion:

In this activity, you used M-MDS to make a DataLogger recording and then play it back.

Instructor Sign-off: _____

INTRODUCTION TO M-MDS

07 - Reprogramming/Updating a PCM

Activity 07: Reprogramming / Updating a PCM

Upon completing this activity you will be able to use M-MDS to reprogram or update a PCM.

What you need to complete this activity:

- A current Mazda vehicle prepped by your instructor
- Mazda-approved PDA with PDS installed
- Mazda-approved laptop with ActiveSync installed
- High-speed internet access

Procedure:

1. Connect the M-MDS data cable to DLC 2 under the dash. The PDA will turn on automatically.

Three USB pop-up messages quickly flash on and off the PDA. You may not see the first two messages:



USB message 1



USB message 2

INTRODUCTION TO M-MDS

07 - Reprogramming/Updating a PCM

Activity 07

(Continued)

The third message, "Status: User Authenticated," is the most important message.



USB message 3

2. Tap **Start** on the main screen.



Your PDA's main screen may look slightly different than this example.

3. Tap **PDS** from the drop-down menu.



INTRODUCTION TO M-MDS

07 - Reprogramming/Updating a PCM

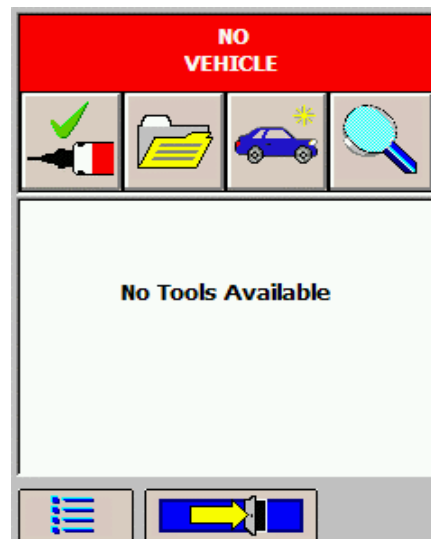
Activity 07

(Continued)

- The PDS Establishing Communications screen flashes on then off. This screen indicates the PDA is connecting to the VCM via the USB network.



- Tap the  **New Vehicle** icon.



- Select **16 pin**, then tap tick.



INTRODUCTION TO M-MDS

07 - Reprogramming/Updating a PCM

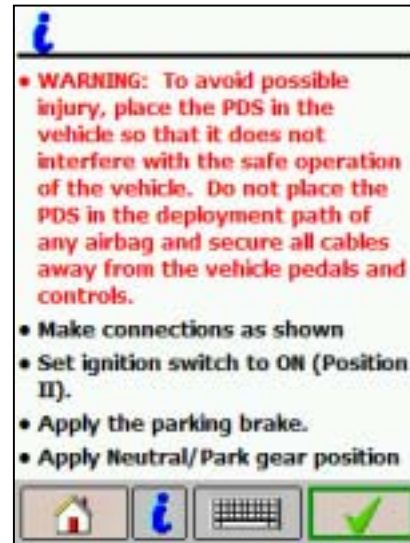
Activity 07

(Continued)

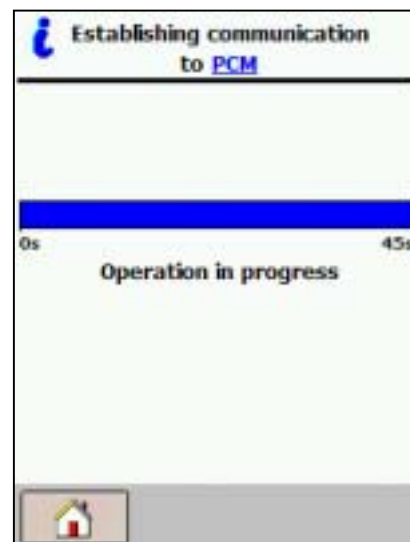
7. Turn the ignition key to KOEO, and then tap tick.

CAUTION

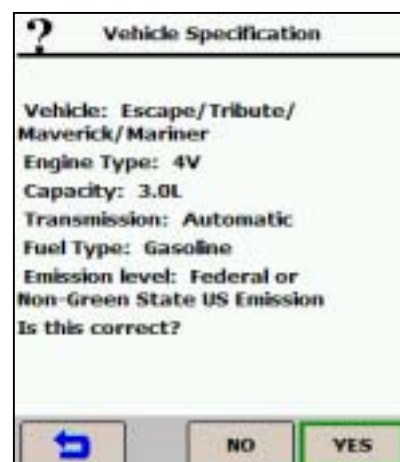
If you do not turn the ignition key ON, you will need to perform a soft reset on your PDA and reboot the VCM.



8. Watch the following Establishing Communication screen flash on then off.



9. Verify the vehicle information is correct, and then tap **YES**.



INTRODUCTION TO M-MDS

07 - Reprogramming/Updating a PCM

Activity 07

(Continued)

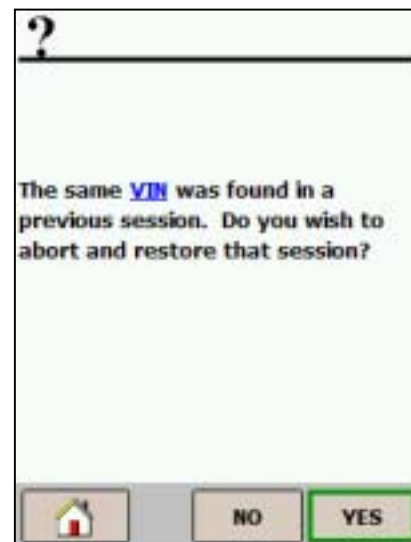
- If desired, leave the fields empty or tap data into any of the fields, then tap TICK.

NOTE

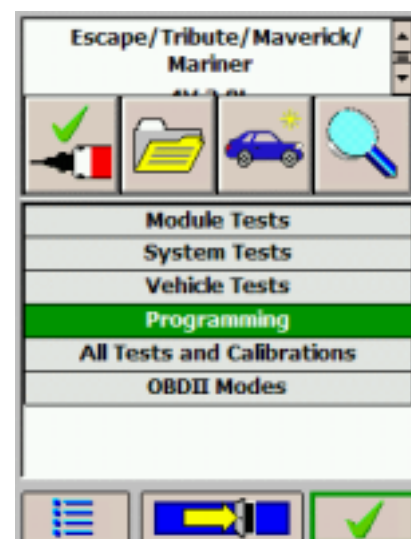
This is an optional screen and you may not see it.



- If this screen displays, tap **NO**.



- Tap **Programming** then tap tick.



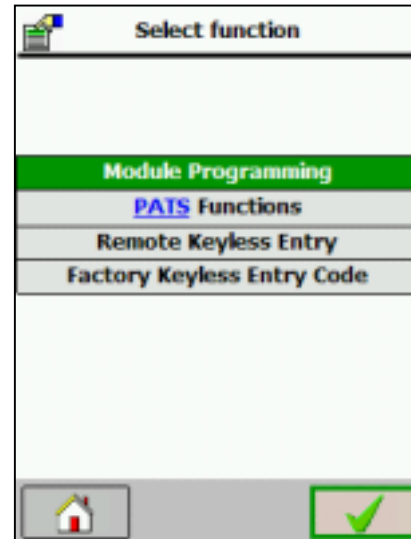
INTRODUCTION TO M-MDS

07 - Reprogramming/Updating a PCM

Activity 07

(Continued)

13. Tap **Module Programming**, if it is not highlighted, then tap tick.



14. Tap **Module Reprogramming**, then tap tick.



15. Tap tick.



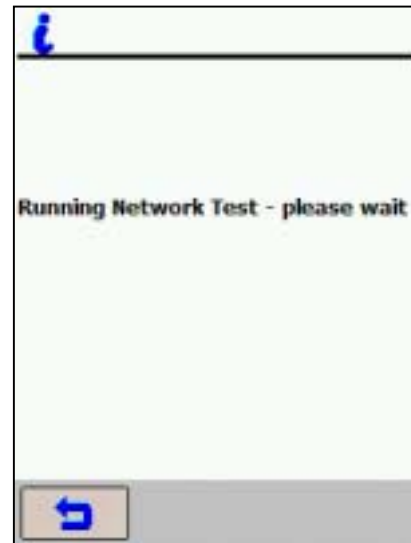
INTRODUCTION TO M-MDS

07 - Reprogramming/Updating a PCM

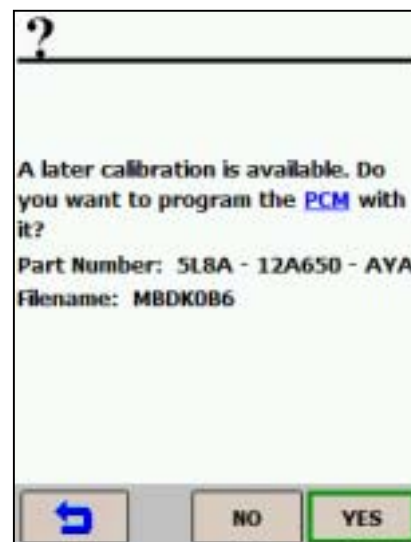
Activity 07

(Continued)

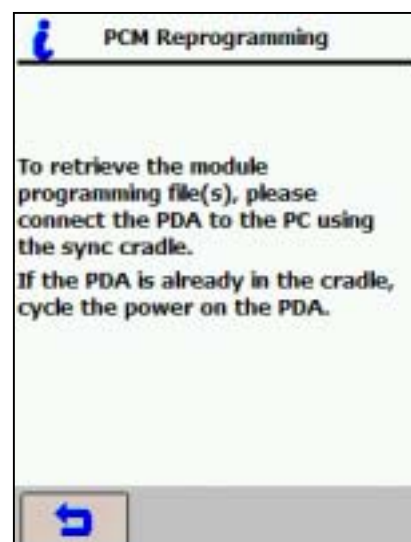
16. This screen flashes on then off.



17. Tap **YES** to retrieve the current calibration file.



18. You may see the following screens, depending on the status of your PDS. Follow the onscreen instructions.



INTRODUCTION TO M-MDS

07 - Reprogramming/Updating a PCM

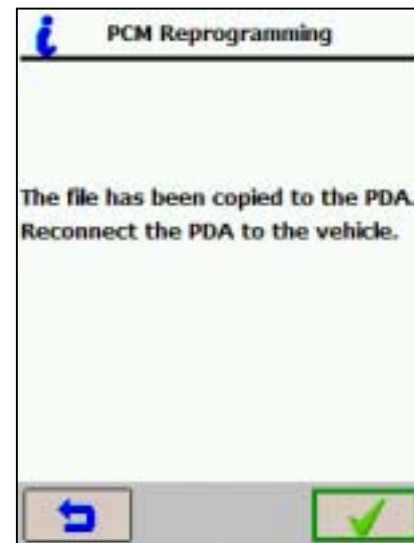
Activity 07

(Continued)

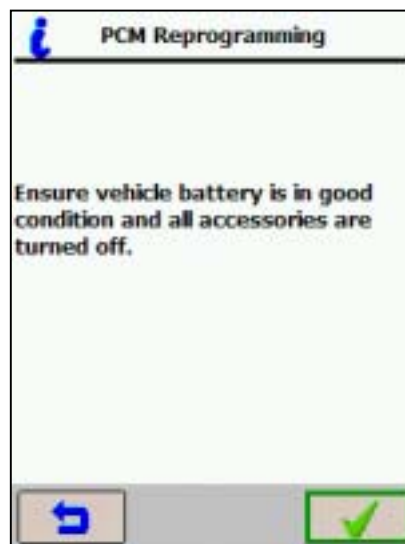
19...Reconnect the PDA to the vehicle, then tap tick.

NOTE

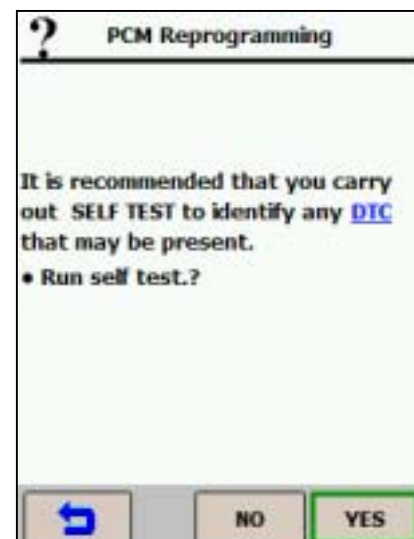
Do not tap tick until you have reconnected the PDA to the vehicle.



20. Tap tick.



21. Tap **YES** to run a self test to identify any DTCs that may be present.



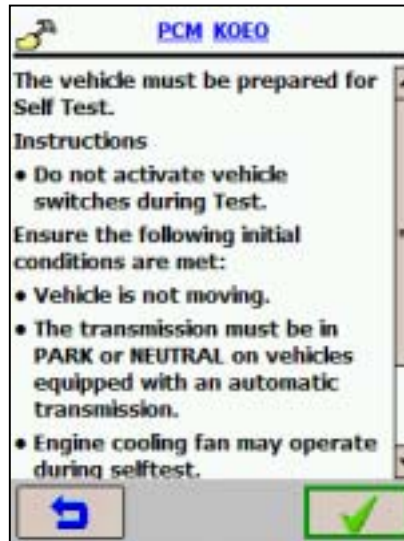
INTRODUCTION TO M-MDS

07 - Reprogramming/Updating a PCM

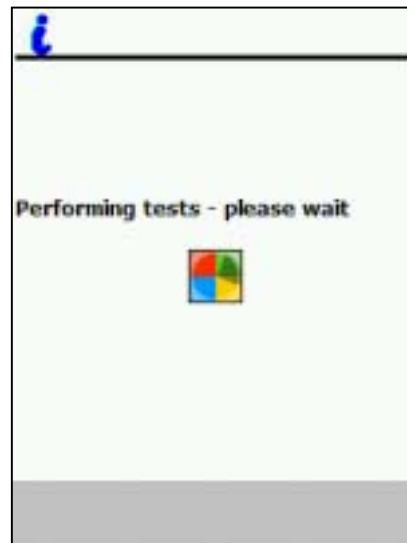
Activity 07

(Continued)

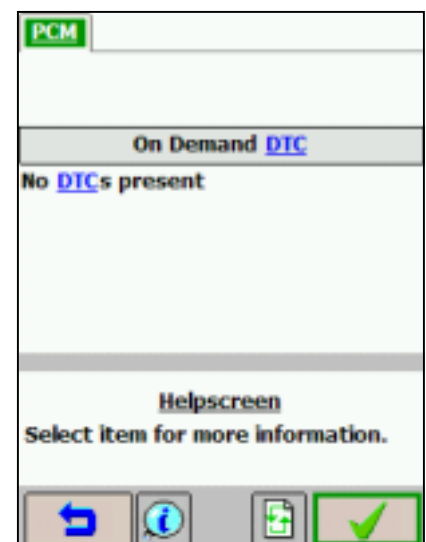
22. Tap tick.



23. This screen flashes on then off.



24. The vehicle you are working on may or may not have DTCs. Some DTCs must be addressed before PCM reprogramming. If you are not sure whether the DTC(s) needs to be addressed before reprogramming, ask your instructor



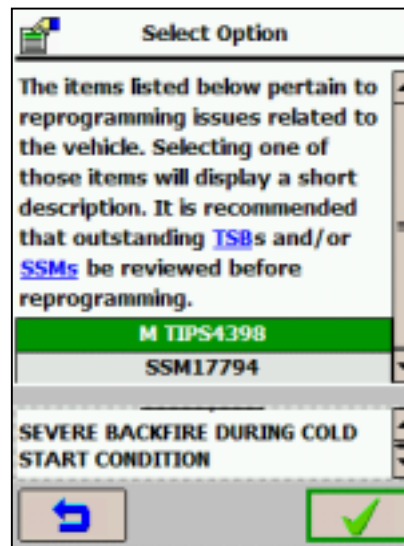
INTRODUCTION TO M-MDS

07 - Reprogramming/Updating a PCM

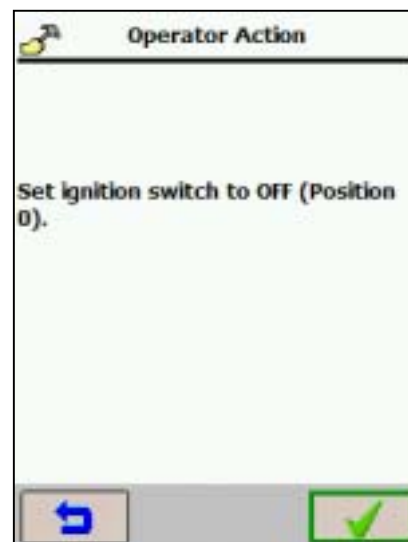
Activity 07

(Continued)

25. Tap tick.

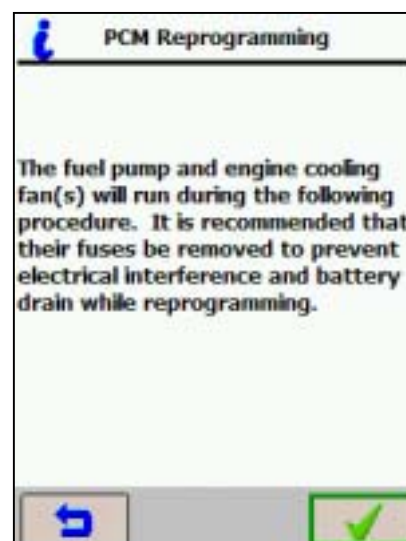


26. Turn the ignition key OFF, then tap tick.



27. Make sure a battery charger is attached to the vehicle and set it to around 15 amps.
Do not remove fuses as instructed.

Tap tick.



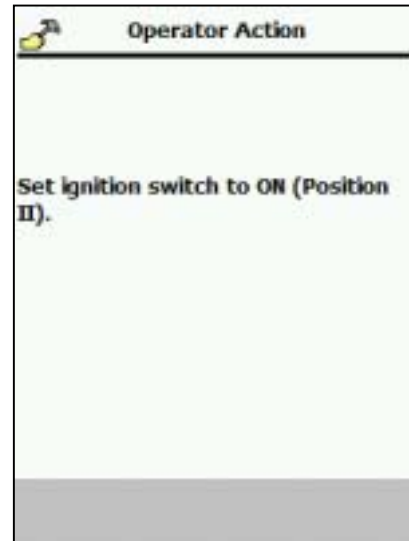
INTRODUCTION TO M-MDS

07 - Reprogramming/Updating a PCM

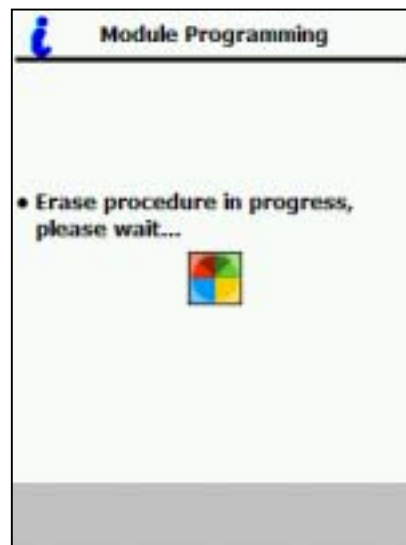
Activity 07

(Continued)

28. Turn the ignition key ON.



29. This screen flashes on then off.



30. The blue "status bar" indicates the progress of data being downloaded to the PDS. It will take several minutes to complete this process.

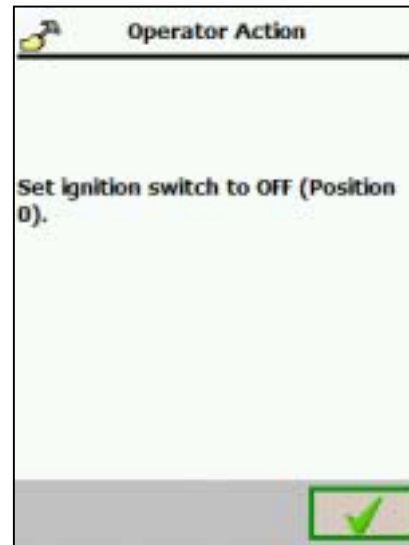


INTRODUCTION TO M-MDS

07 - Reprogramming/Updating a PCM

Activity 07 (Continued)

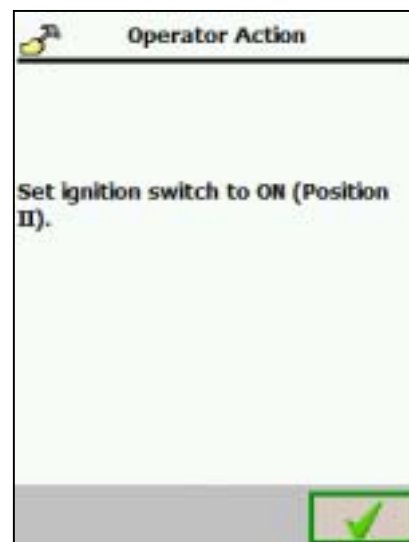
31. Turn the ignition key OFF, then tap tick.



32. This screen indicates the progress of the module programming. It will take about 15 seconds.



33. Turn the ignition key ON, then tap tick.



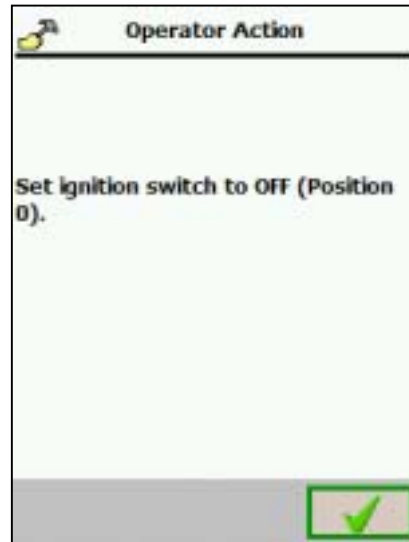
INTRODUCTION TO M-MDS

07 - Reprogramming/Updating a PCM

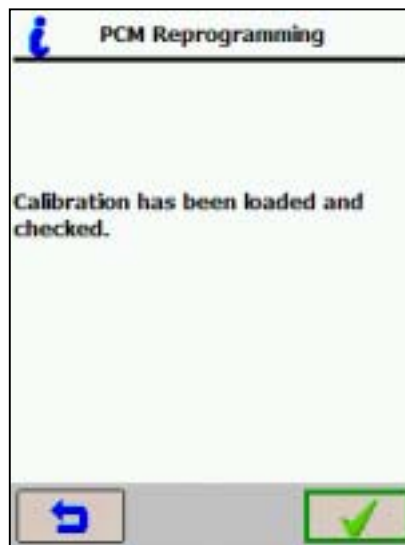
Activity 07

(Continued)

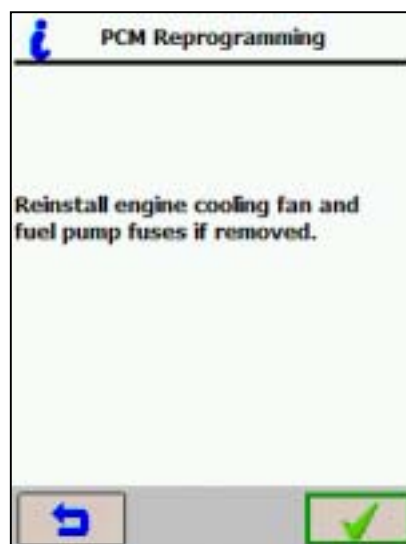
34. Turn the ignition key OFF, then tap tick.



35. Tap tick.



36. Tap tick again.



INTRODUCTION TO M-MDS

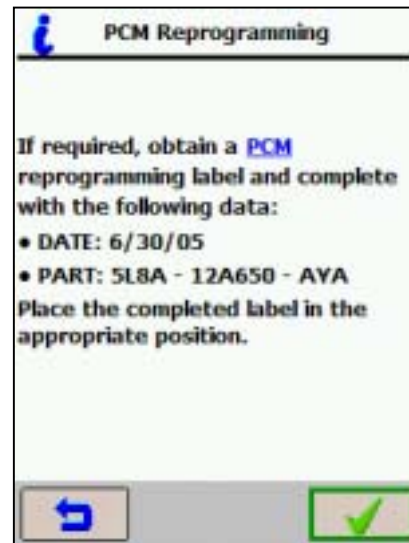
07 - Reprogramming/Updating a PCM

Activity 07

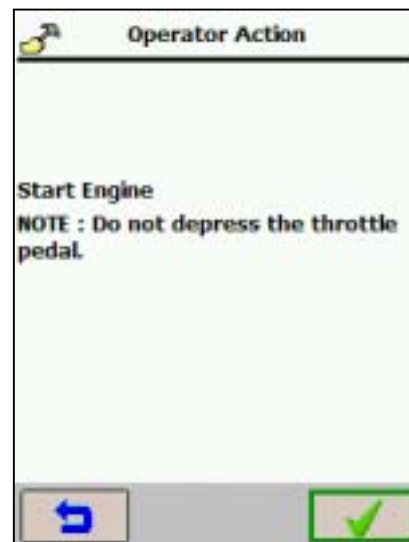
(Continued)

37. Follow the screen instructions to complete the PCM update label. If you are not sure where to place the label, ask your instructor.

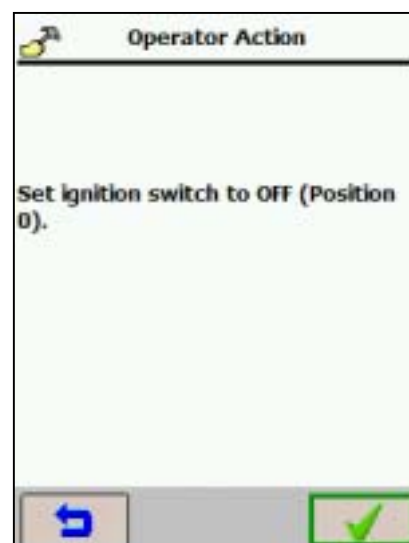
Tap tick.



38. Start the engine, then tap tick.



39. Turn the ignition key OFF, then tap tick.



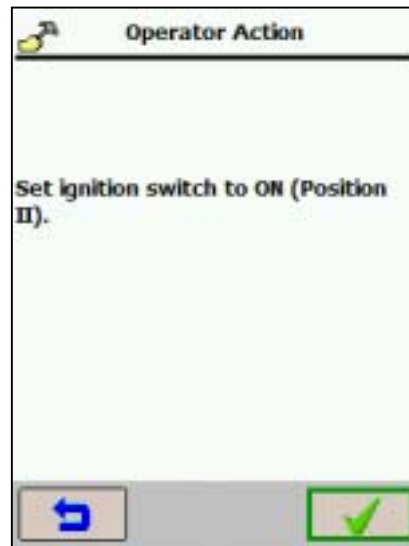
INTRODUCTION TO M-MDS

07 - Reprogramming/Updating a PCM

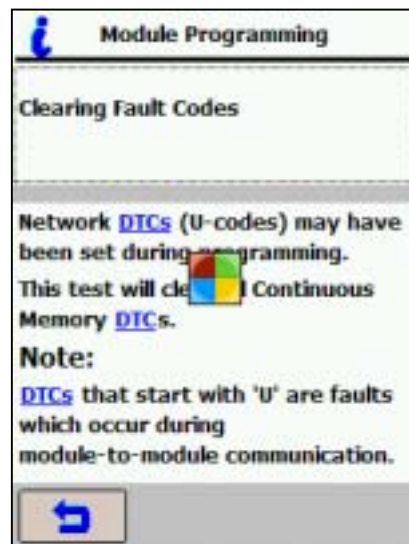
Activity 07

(Continued)

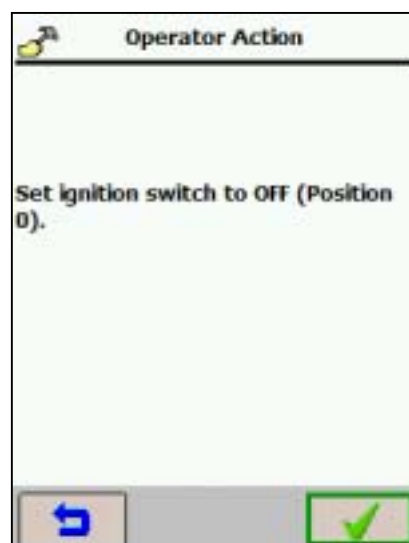
40. Turn the ignition key ON, then tap tick.



41. This screen flashes on then off.



42. Turn the ignition key OFF, then tap tick.




INTRODUCTION TO M-MDS

07 - Reprogramming/Updating a PCM

Activity 07

(Continued)

43. Tap **Programmable Module Installation**, if it is not

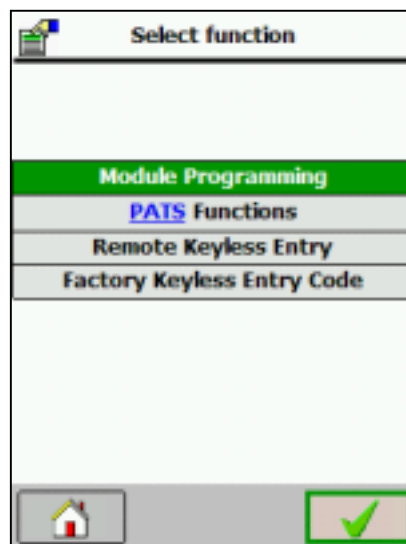
highlighted, then tap  **Go to Previous Screen.**



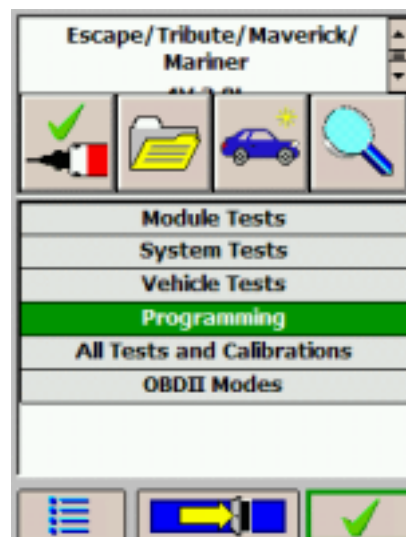
44. Tap **Module Programming**, if it is not highlighted, then tap



Go to Previous Screen.



45. Tap  **Exit PDS.**



INTRODUCTION TO M-MDS

07 - Reprogramming/Updating a PCM

Activity 07

(Continued)

The main screen displays:



Your PDA's main screen may look slightly different than this example.

46. Turn the ignition key OFF.
47. Disconnect PDS from the vehicle.
48. Turn OFF the PDA.

Conclusion:

In this activity, you used M-MDS to reprogram or update a PCM.

Instructor Sign-off: _____

INTRODUCTION TO M-MDS

08 - Verify/Change Programmable Parameters

 TC001-18-01H

Activity 08: Verify/Change Programmable Parameters

Upon completing this activity you will be able to View/Change Programmable Parameters on a current Mazda using M-MDS.

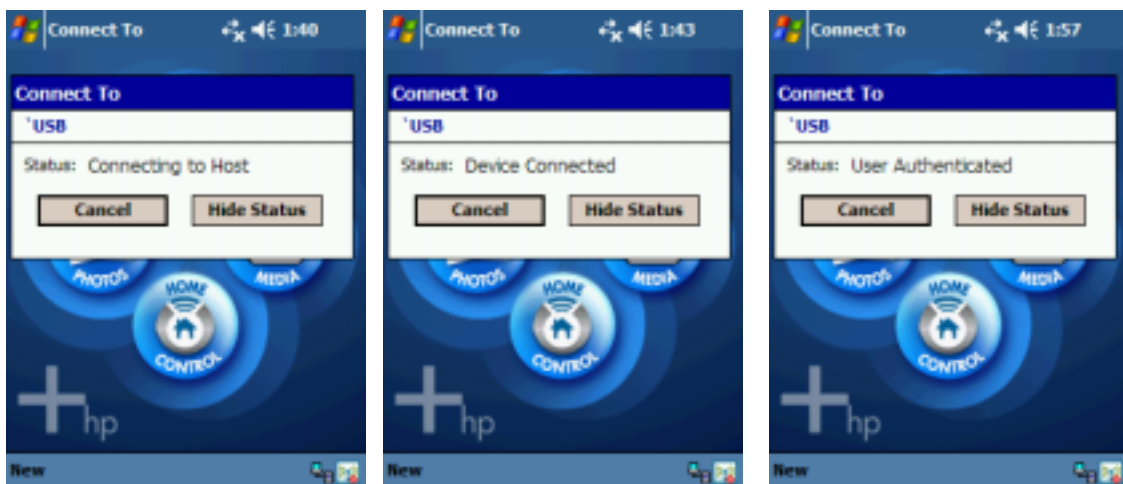
What you will need to complete this activity:

- A Current Tribute or B Series Mazda
- PDS

Connect the M-MDS data cable to DLC number 2 under the dash.
The PDA will turn on automatically.

Important!

You should see all 3 of the following USB pop up boxes. However they may “flash by” to quick to see. The most important is the 3rd one “user authenticated”



INTRODUCTION TO M-MDS

08 - Verify/Change Programmable Parameters

Activity 08 (Continued)



Establishing Communications



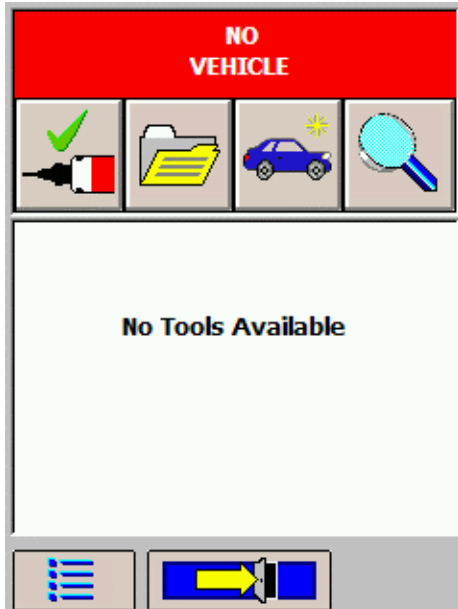
Note:
The screen above is the PDA connecting to the VCM via the USB network.

INTRODUCTION TO M-MDS

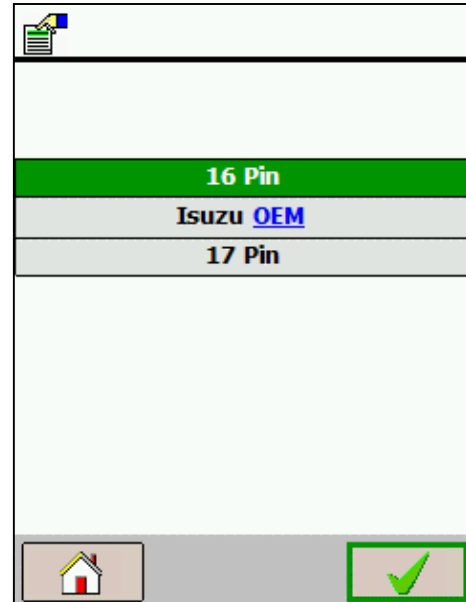
08 - Verify/Change Programmable Parameters

TC001-18-01H

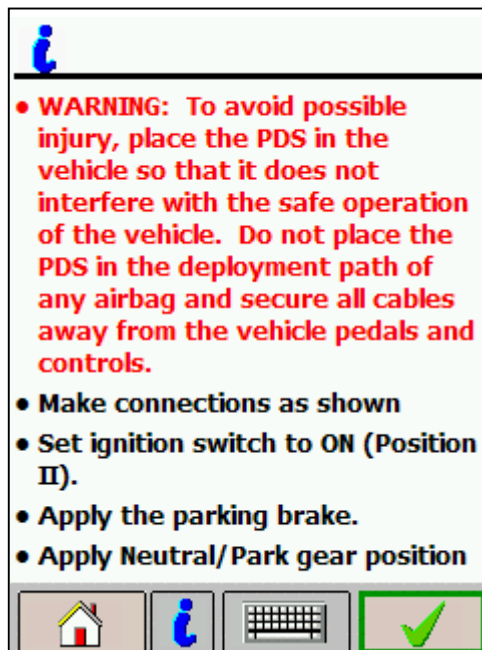
Activity 08 (Continued)



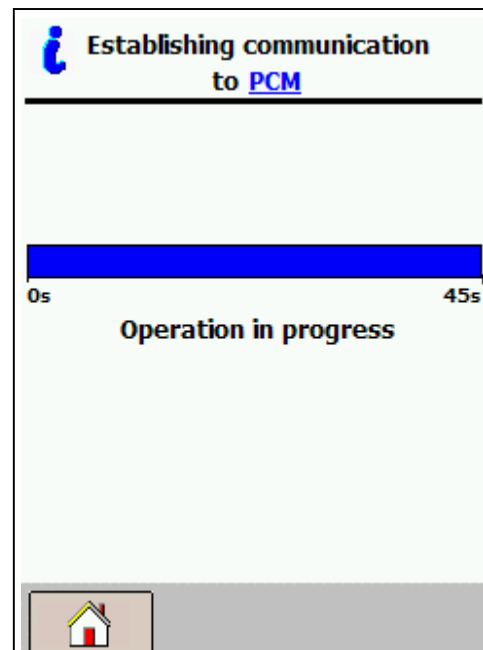
1. Tap the blue car



2. Tap Tick



3. Tap Tick



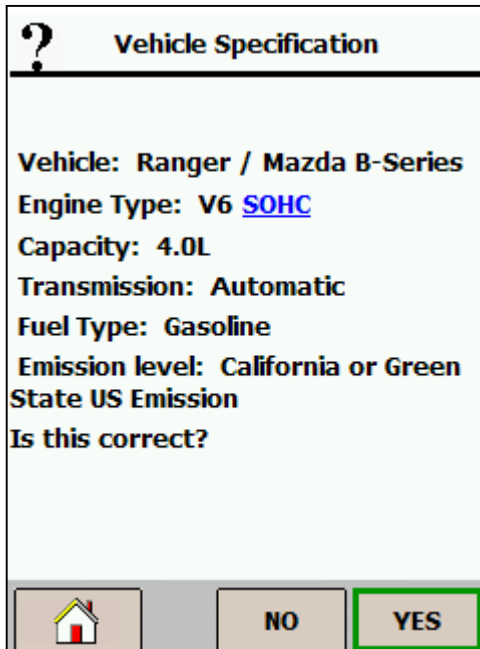
4. Establishing Communication

INTRODUCTION TO M-MDS

08 - Verify/Change Programmable Parameters

Activity 08

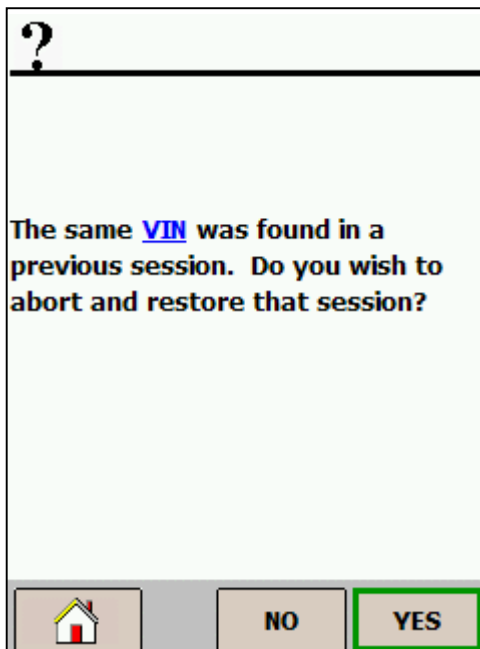
(Continued)



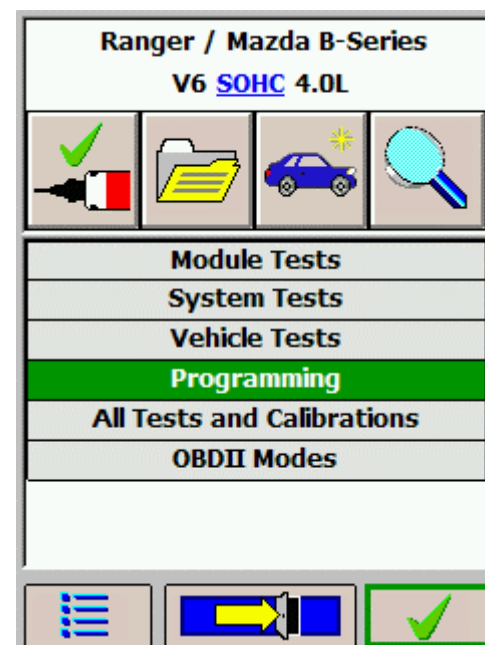
5. Tap Yes



6. Tap Tick



7. Tap NO



8. Select Programming, Tap Tick

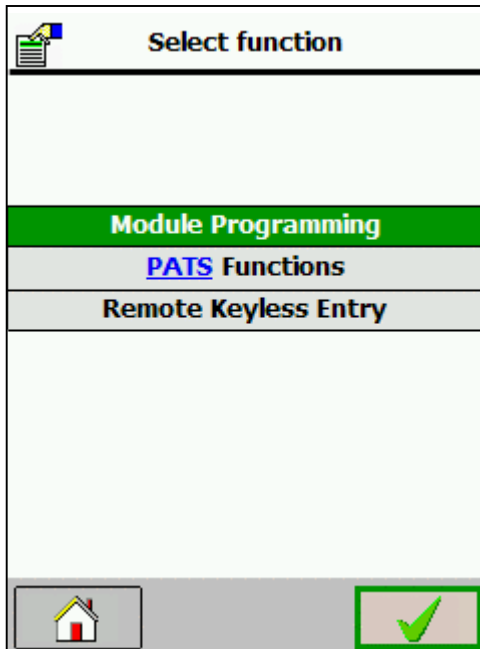
INTRODUCTION TO M-MDS

08 - Verify/Change Programmable Parameters

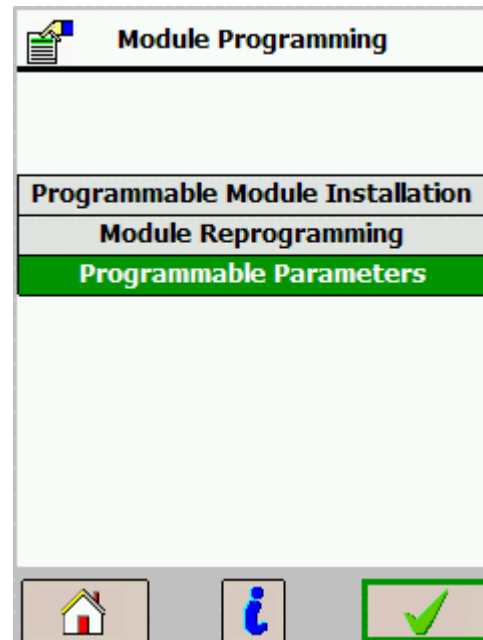
TC001-18-01H

Activity 08

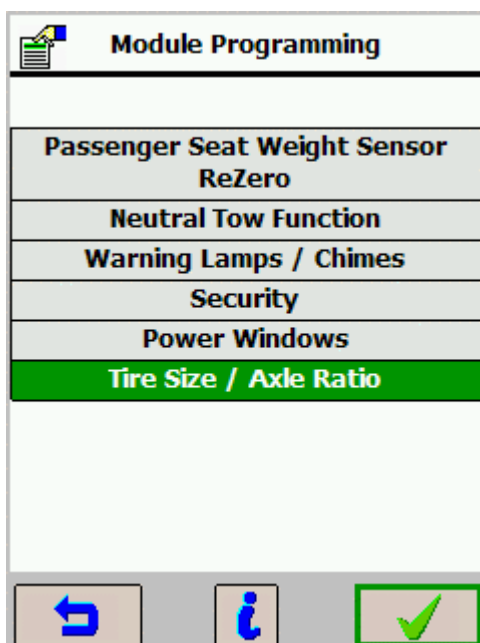
(Continued)



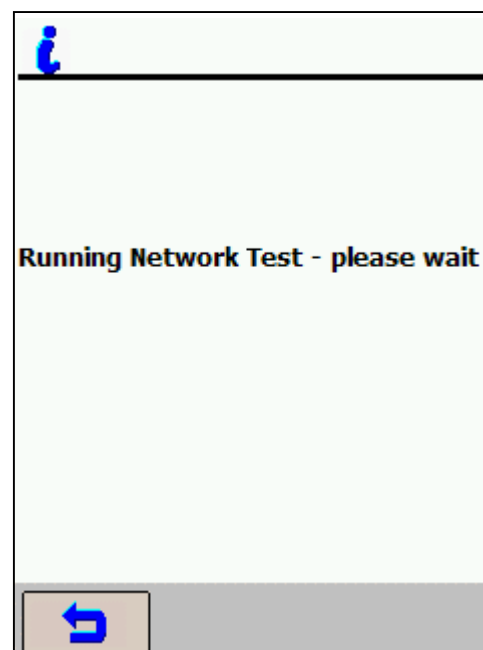
9. Tap Tick



10. Select Programmable Parameters, Tap Tick



11. Select Tire Size/Axle Ratio, Tap Tick



12. Please wait.

INTRODUCTION TO M-MDS

08 - Verify/Change Programmable Parameters

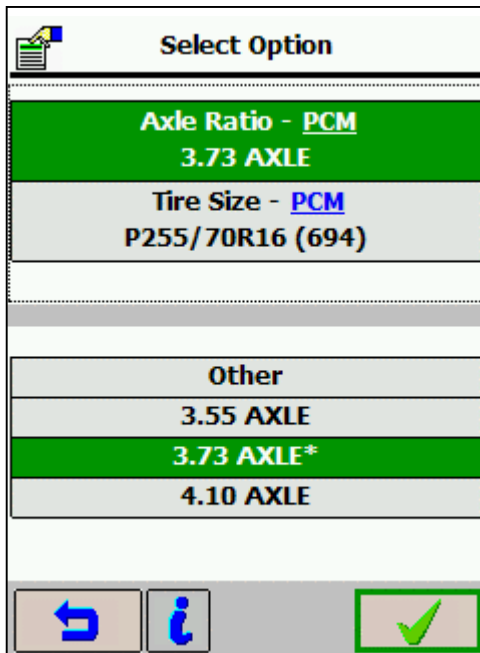
TC001-18-01H

Activity 08

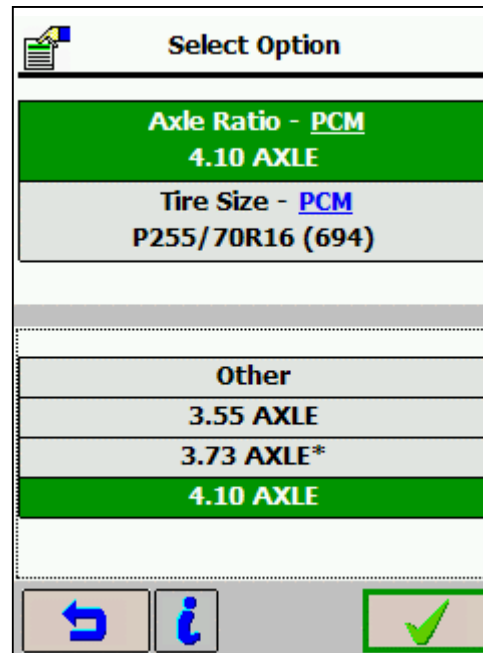
(Continued)

Confirm the tire size and axle ratio. If they are incorrect, select the correct size/axle ratio then Tap Tick. Verify correct information with your instructor.

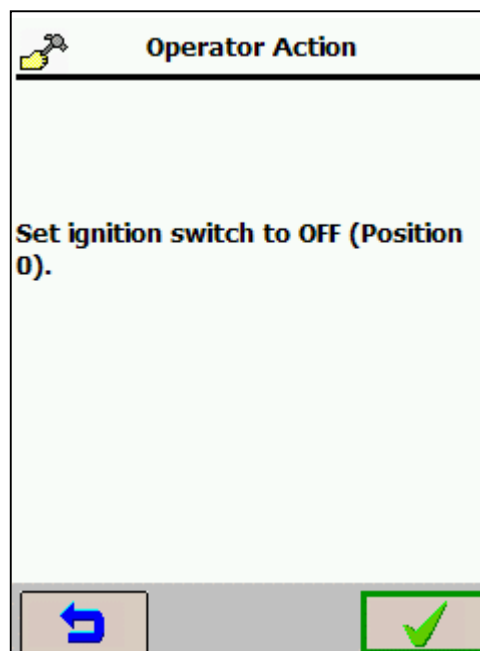
Where did you find the information? _____



13. If Size and Ratio is now correct, Tap Tick



14. Tap Tick



15. Follow prompts on screen. Tap Tick

INTRODUCTION TO M-MDS

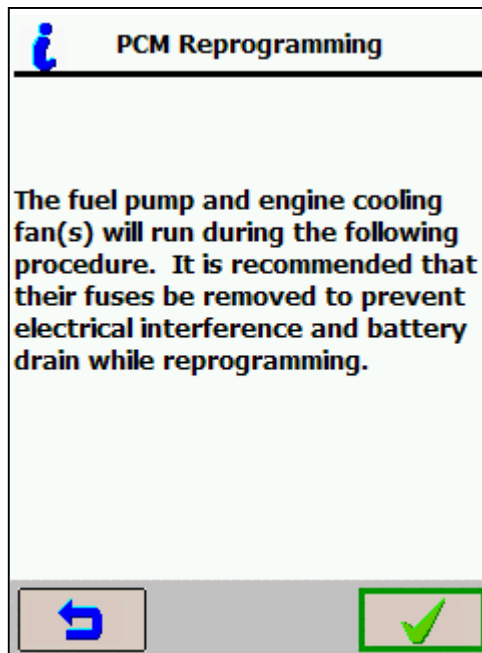
08 - Verify/Change Programmable Parameters

TC001-18-01H

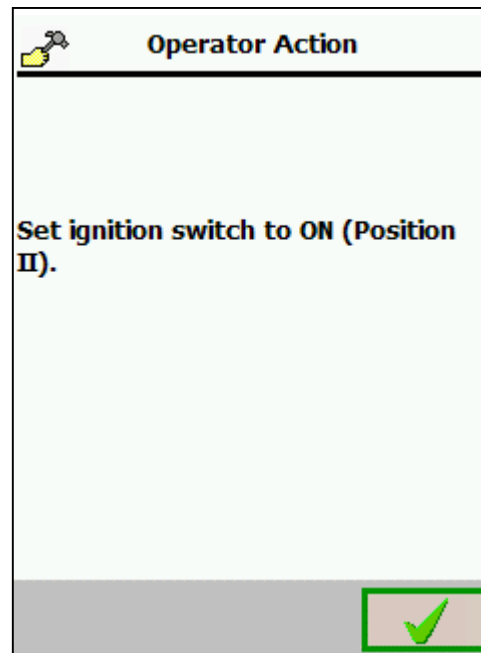
Activity 08 (Continued)

NOTE

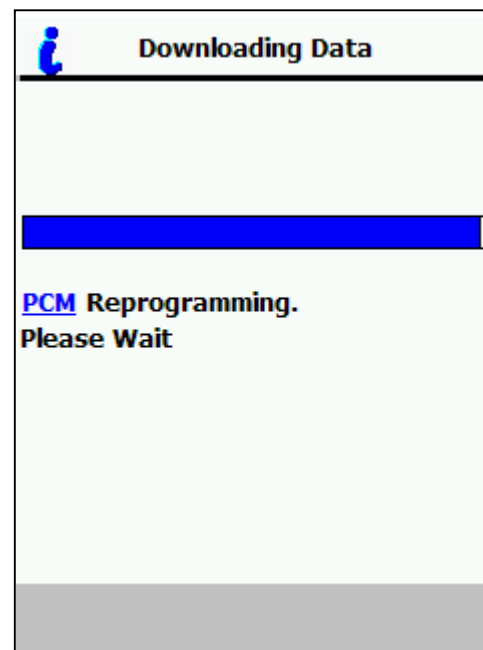
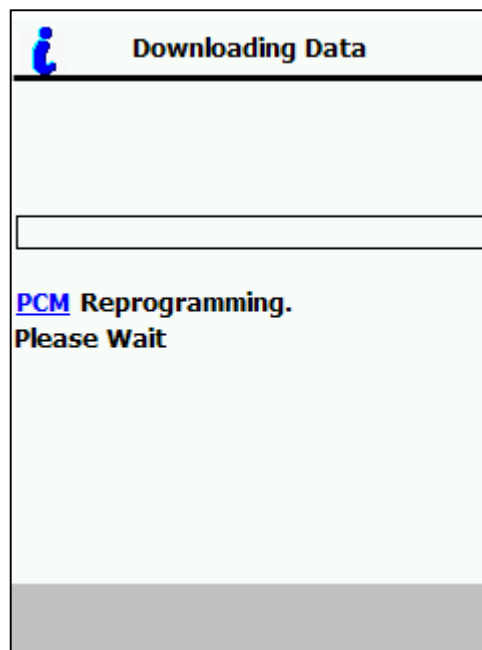
Do NOT remove fuses as instructed to on the next screen. Make sure the vehicles battery is fully charged and that you have a battery charger set to around 15 amps connected to the vehicles battery.



1. Tap Tick




2. Turn Ignition on, Tap Tick



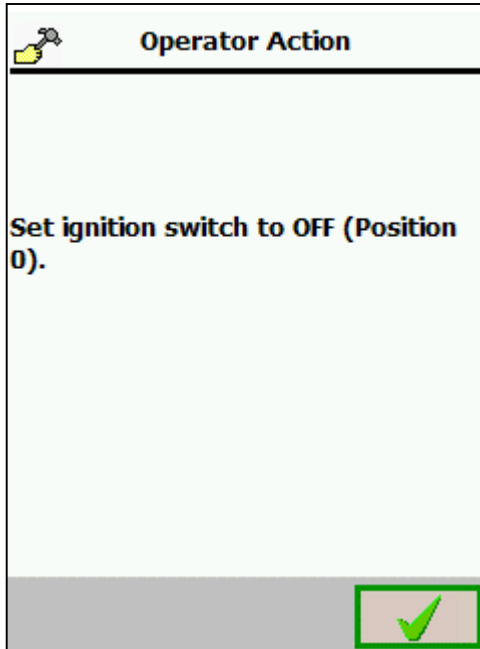
3. Wait until the screens have shown the finished reprogramming.

INTRODUCTION TO M-MDS

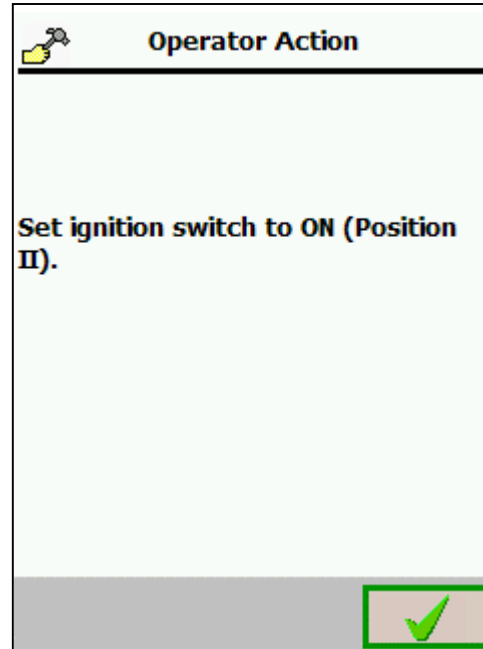
08 - Verify/Change Programmable Parameters

 TC001-18-01H

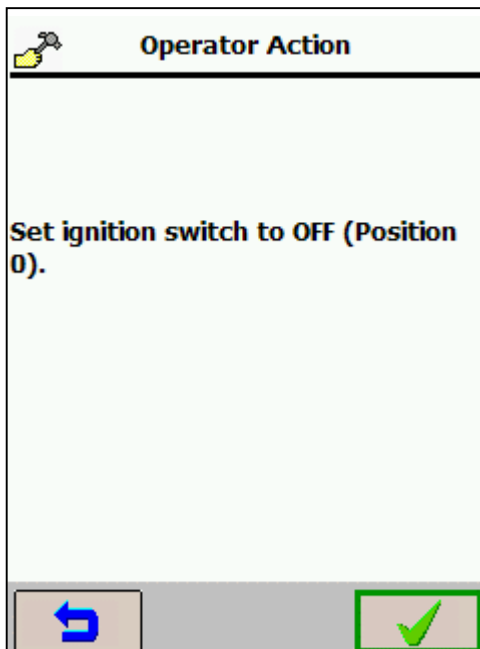
Activity 08 (Continued)



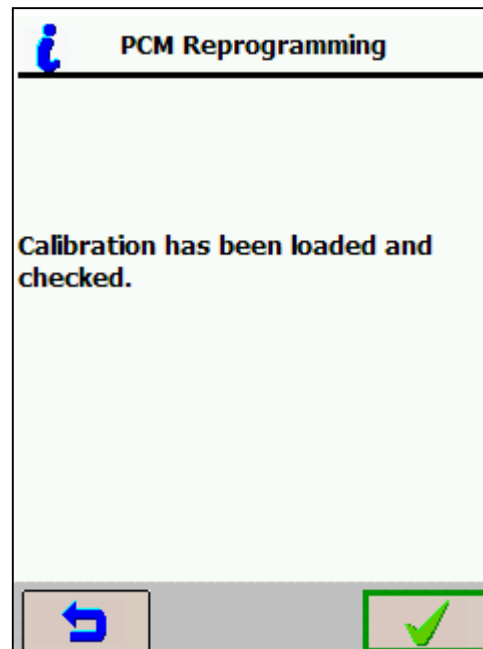
4. Turn ignition off, Tap Tick



5. Turn ignition on, Tap Tick




6. Turn ignition off, Tap Tick



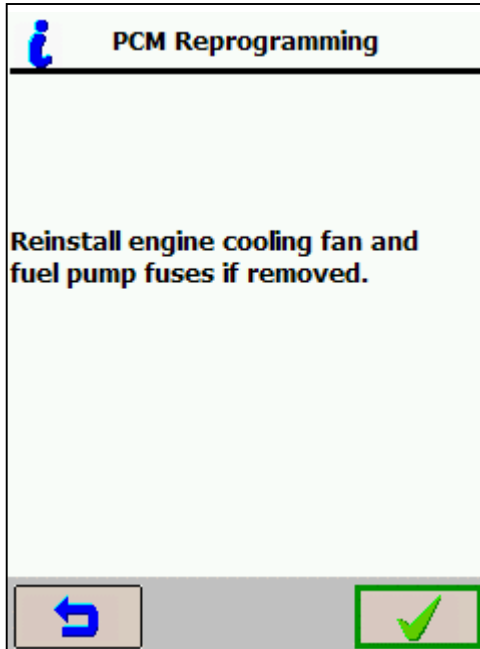
7. Tap Tick

INTRODUCTION TO M-MDS

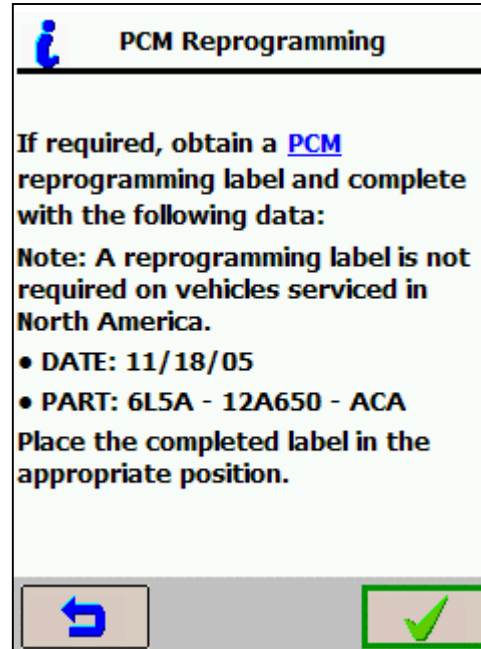
08 - Verify/Change Programmable Parameters

 TC001-18-01H

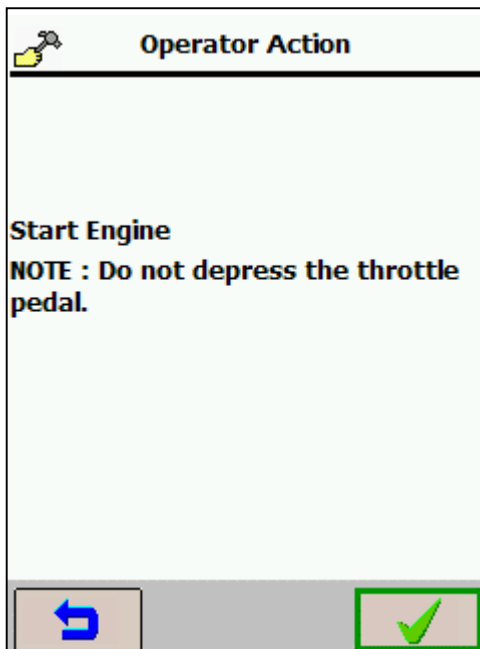
Activity 08 (Continued)



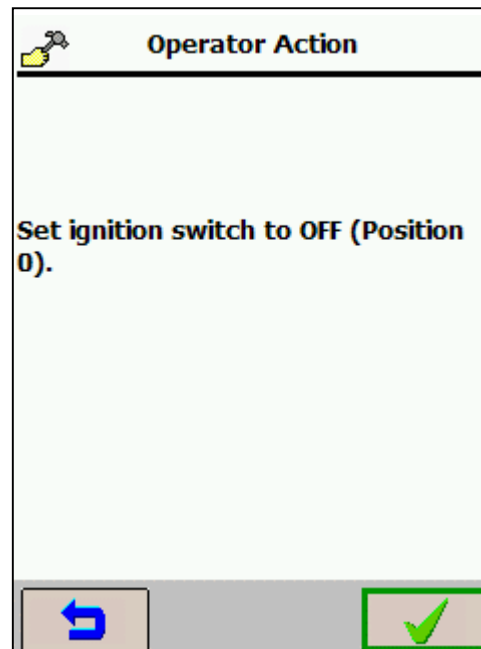
8. Tap Tick



9. Tap Tick



10. Start Engine, Tap Tick



11. Turn ignition off, Tap Tick

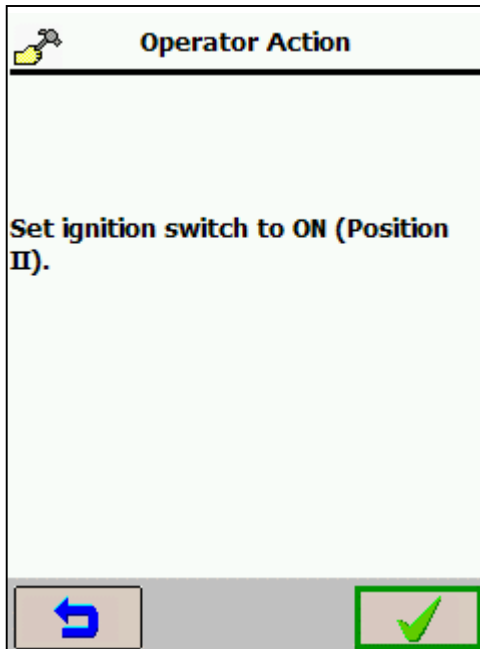
INTRODUCTION TO M-MDS

08 - Verify/Change Programmable Parameters

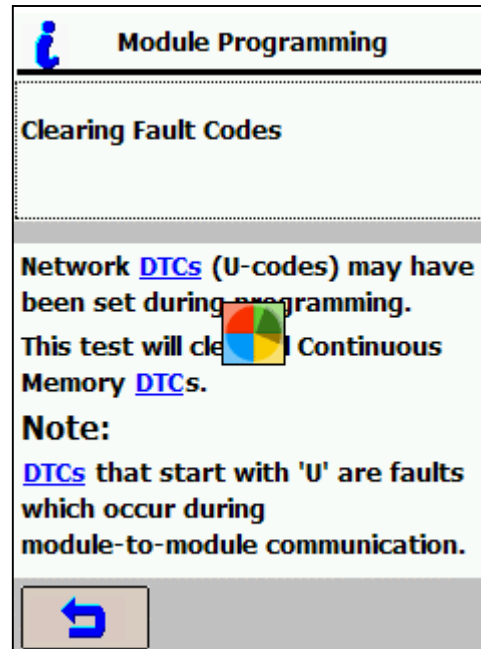
TC001-18-01H

Activity 08

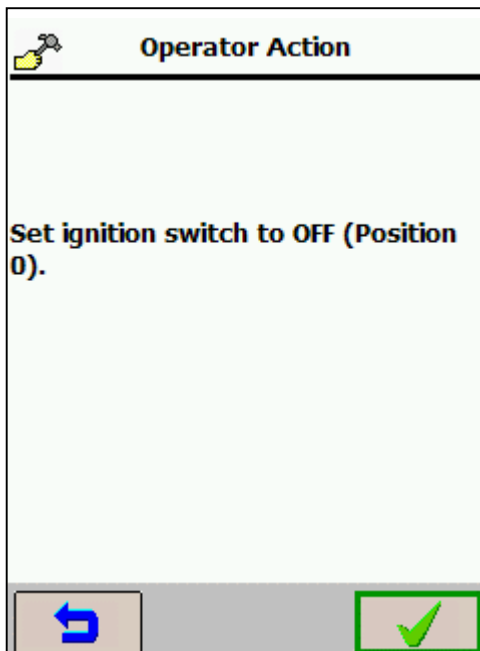
(Continued)



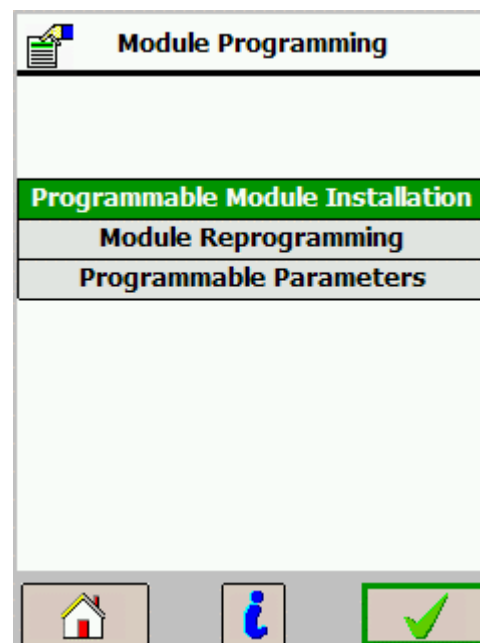
12. Turn ignition on, Tap Tick



13. Be Patient



14. Turn ignition off, Tap Tick



15. Tap Home

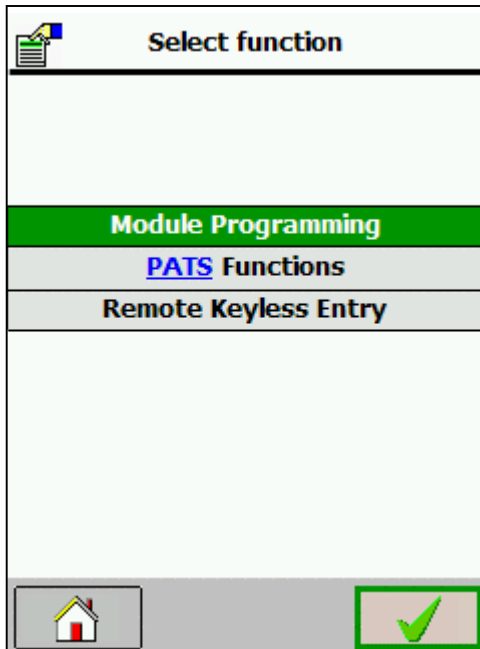
INTRODUCTION TO M-MDS

08 - Verify/Change Programmable Parameters

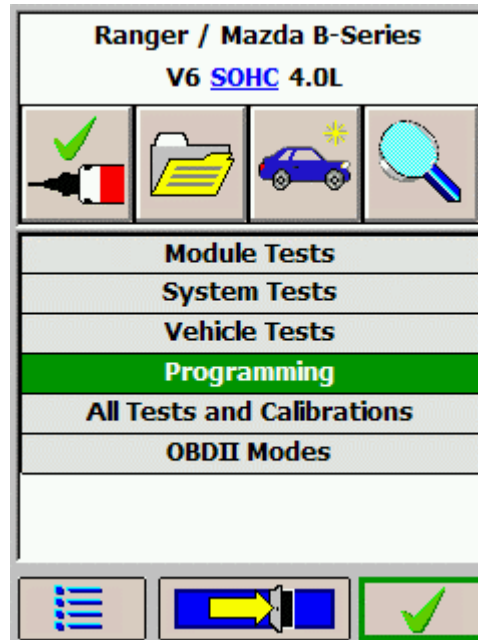
TC001-18-01H

Activity 08

(Continued)



16. Tap Home



17. Tap the yellow exit arrow

18. Disconnect PDS and turn off the PDA



Instructor Sign Off: _____

INTRODUCTION TO M-MDS

09 - Removing PFM & PDS from Laptop

 TC001-18-01H

Activity 09: Removing PFM & PDS from Laptop

Upon completing this activity you will be able to remove PDS and PFM from your laptop or PC.

What you need to complete this activity:

- Mazda-approved laptop or PC with ActiveSync and PDS and PFM installed
- Ask your Instructor to log in to the PC before you begin this activity

Procedure:

NOTES

You will need to perform this activity at your dealership only if the PDS software has become damaged and needs to be reloaded. Most PDS concerns can be fixed by “soft resetting” your PDA.

To do this activity, you must have Administrator rights to install and remove software from the laptop or PC.

1. Left click (i.e., click) **Start** in the lower left corner of the desktop, then click **Control Panel**.



INTRODUCTION TO M-MDS

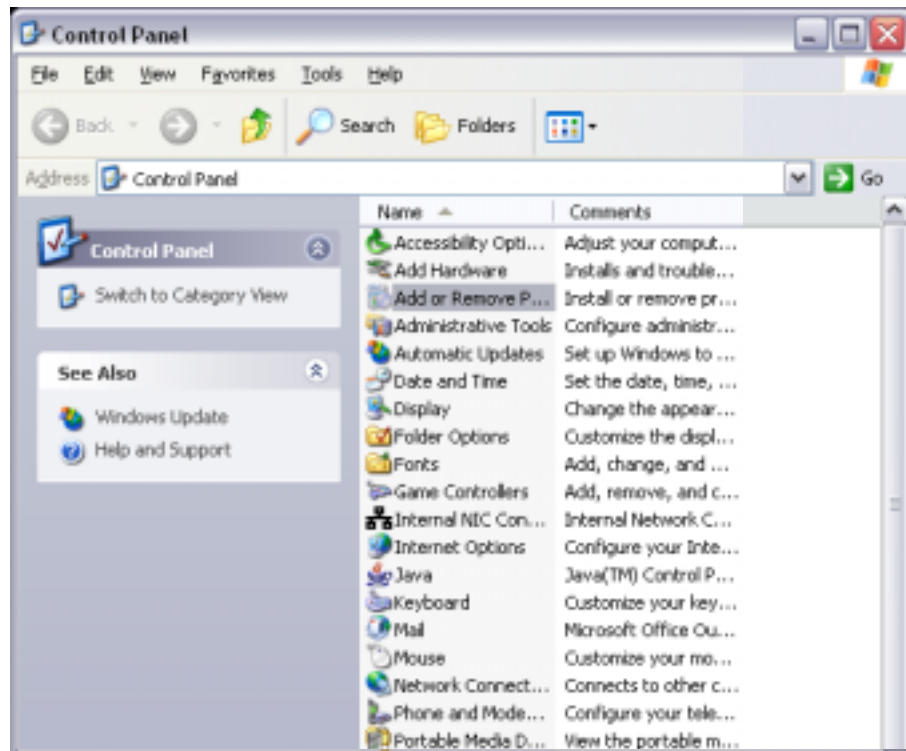
09 - Removing PFM & PDS from Laptop

Activity 09

(Continued)

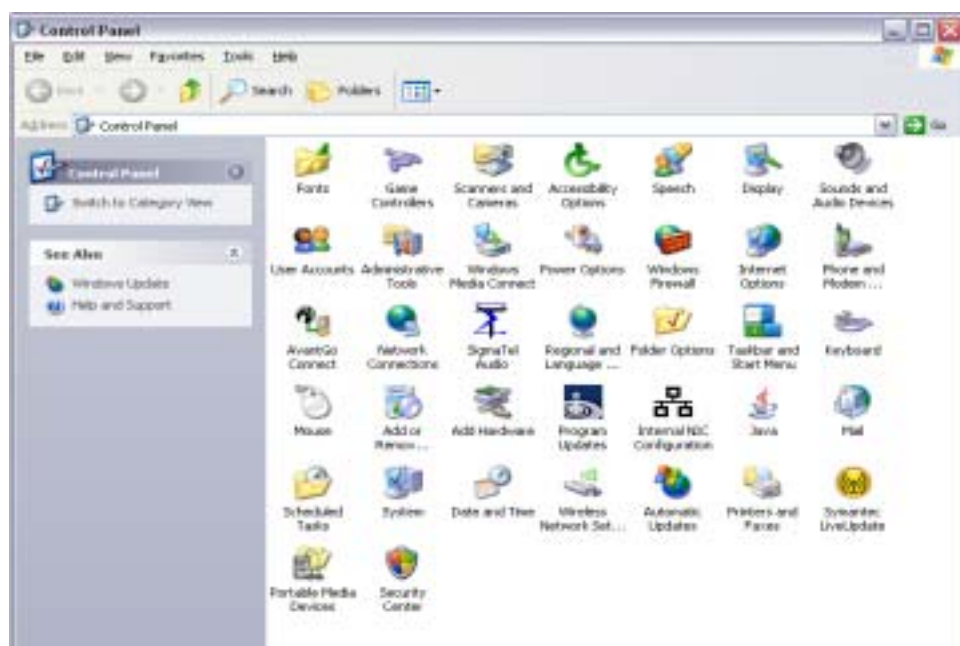
2. When the Control Panel window displays, double left click (i.e., double-click) **Add or Remove Programs**. The window may look similar to these examples:

- A list of options



- OR -

- A list of icons

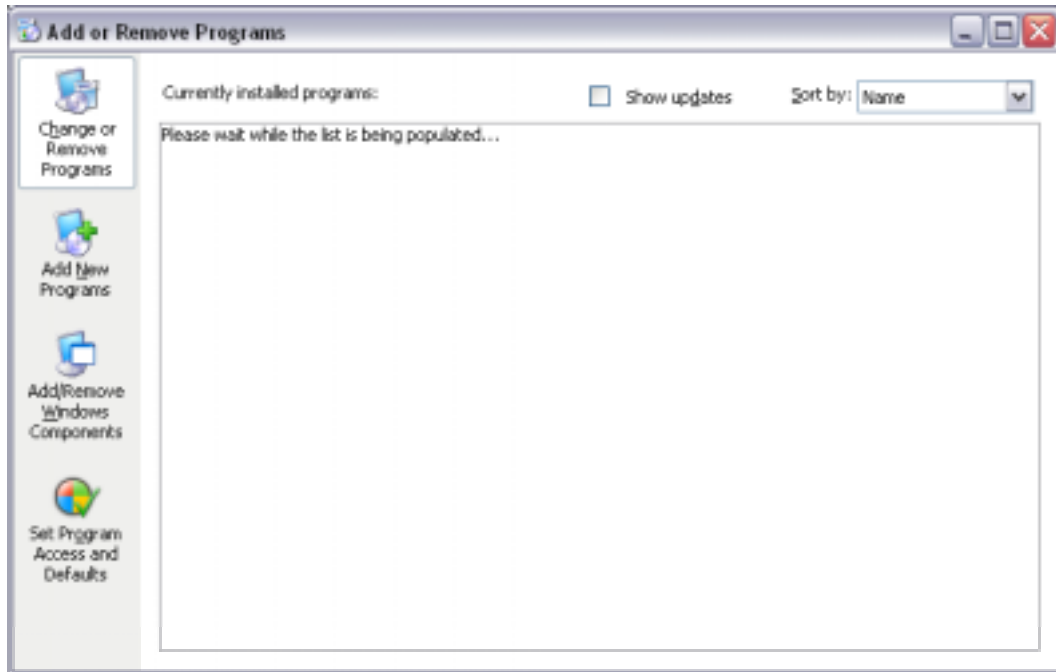


INTRODUCTION TO M-MDS

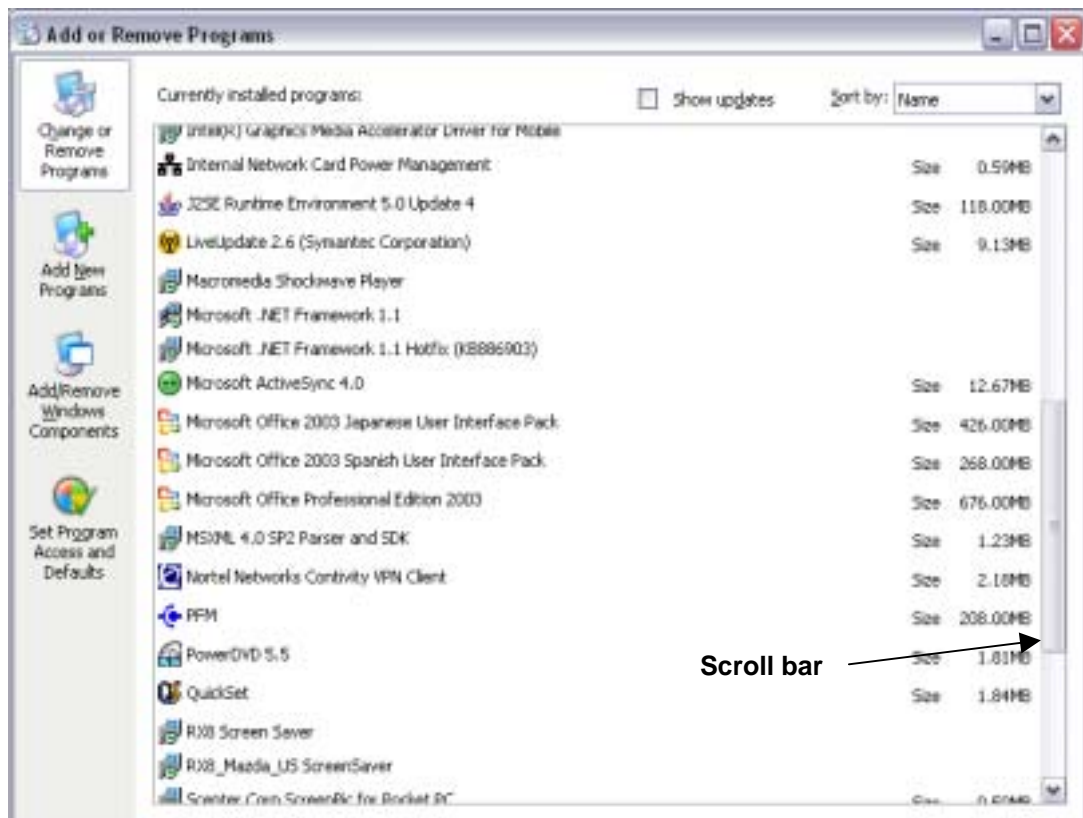
09 - Removing PFM & PDS from Laptop

Activity 09 (Continued)

- Please wait for the list of programs to display.



- Use the scroll bar on the right side of the Add or Remove Programs window to scroll down to **PFM**.



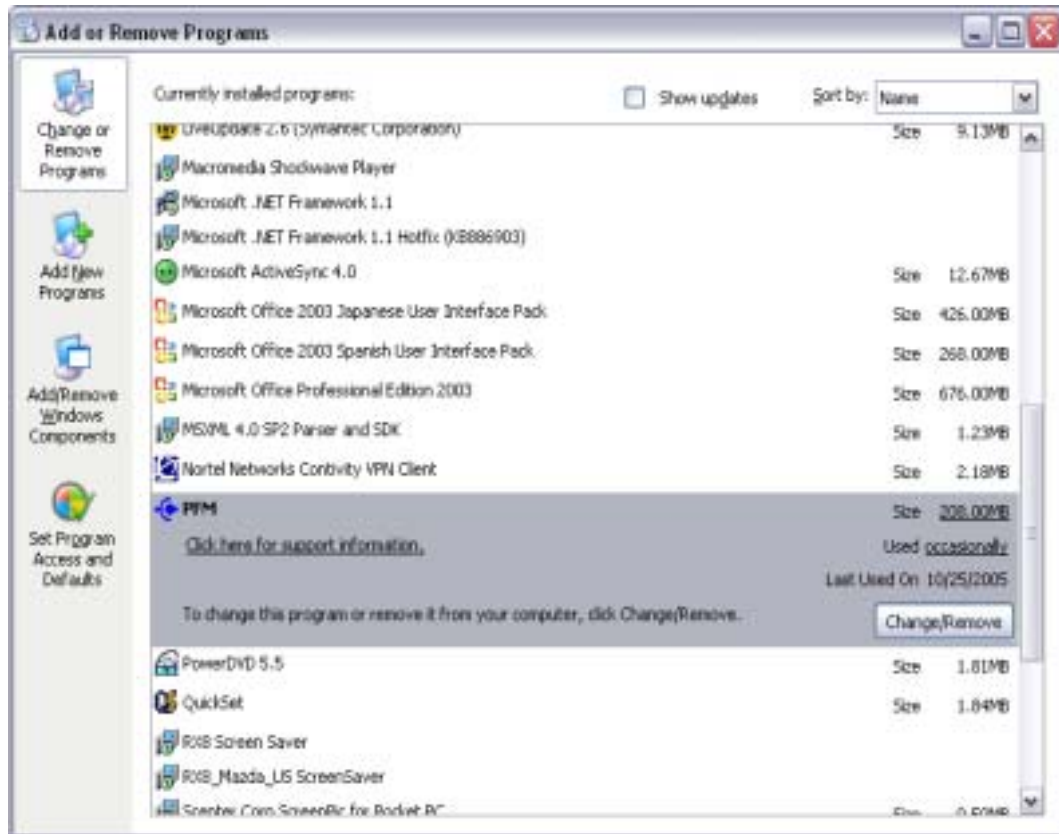
INTRODUCTION TO M-MDS

09 - Removing PFM & PDS from Laptop

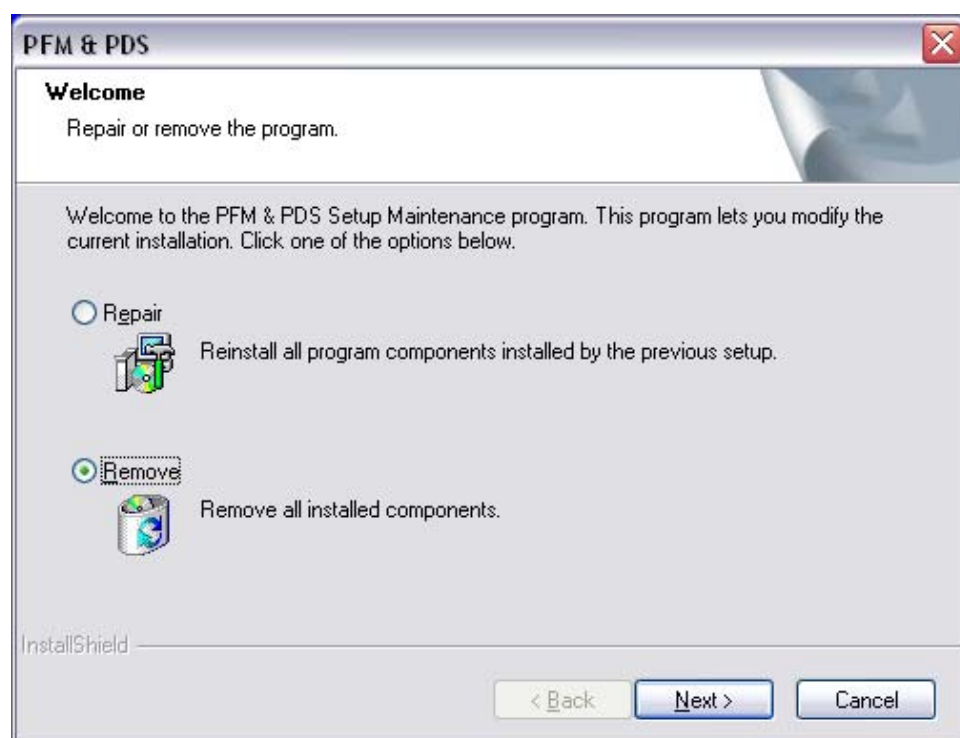
TC001-18-01H

Activity 09 (Continued)

- Click **PFM**, and then click the **Change/Remove** button.



- Click the **Remove** option, and then click **Next**

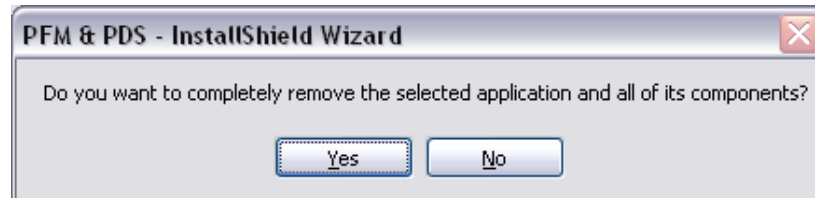


INTRODUCTION TO M-MDS

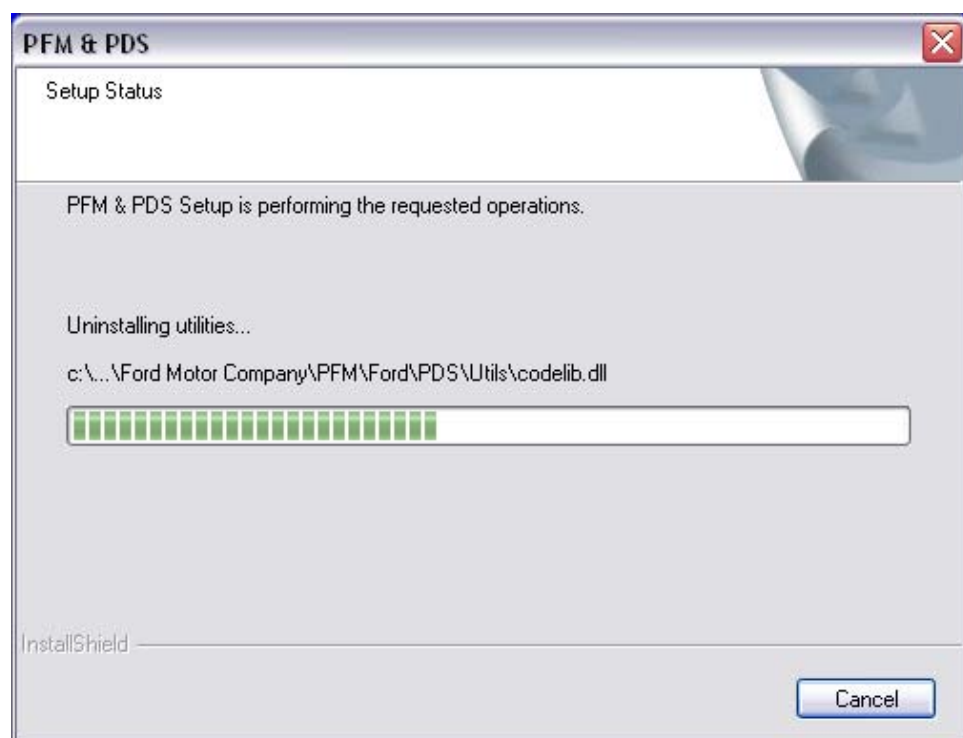
09 - Removing PFM & PDS from Laptop

Activity 09 (Continued)

7. Click **Yes**.



8. This window indicates the progress of the requested operation, removing PFM & PDS.

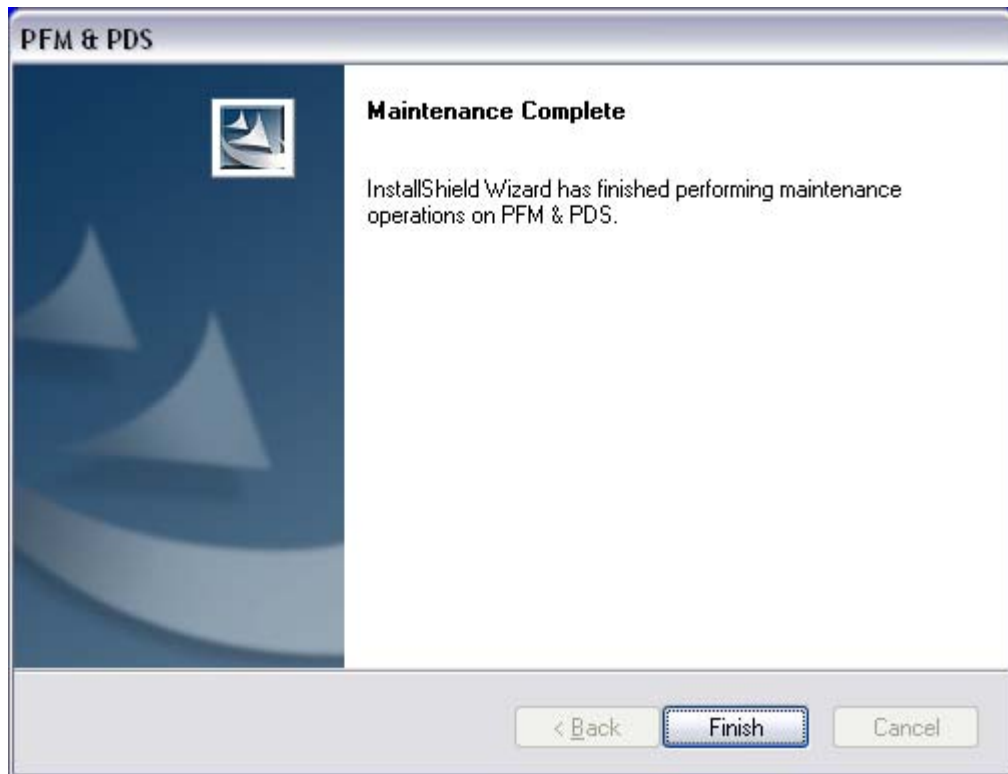


INTRODUCTION TO M-MDS

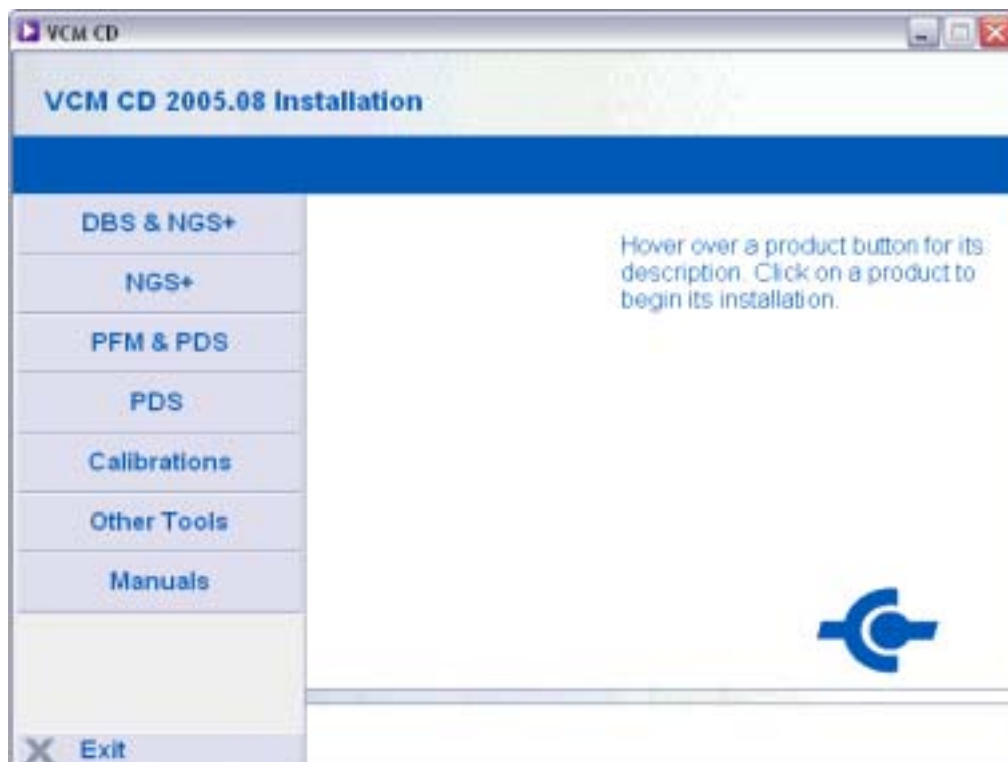
09 - Removing PFM & PDS from Laptop

Activity 09 (Continued)

9. Click **Finish**.




10. If the VCM CD window is open click **Exit** in the lower left corner.



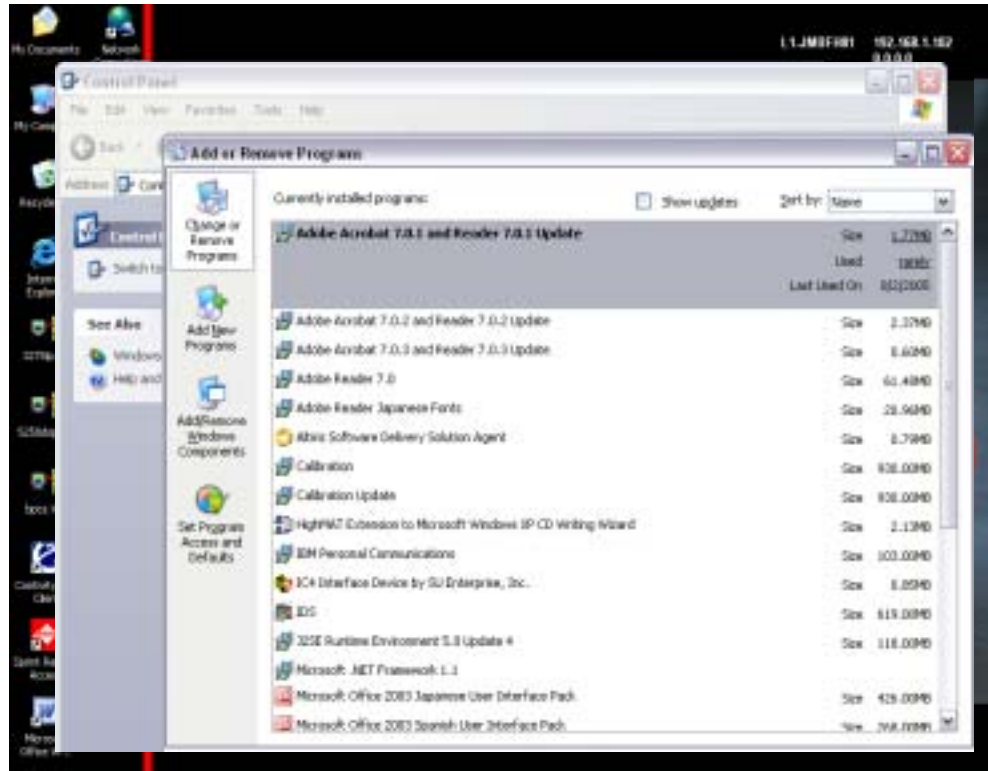
INTRODUCTION TO M-MDS

09 - Removing PFM & PDS from Laptop

 TC001-18-01H

Activity 09 (Continued)

- Close the open windows on the desktop by clicking the **X** in the upper right corner of each window.



PFM & PDS is now removed from your laptop or PC.

Conclusion:

In this activity, you removed PFM & PDS from your laptop or PC.

Instructor Sign-off: _____

INTRODUCTION TO M-MDS

10 - Removing Microsoft ActiveSync

Activity 10: Removing Microsoft ActiveSync

Upon completing this activity you will be able to remove Microsoft ActiveSync from your host laptop or PC.

What you need to complete this activity:

- Mazda-approved laptop or PC with ActiveSync installed
- Ask your Instructor to log in to the PC before you begin this activity

Procedure:

NOTES

You will need to remove ActiveSync only if you are replacing or changing the PDA.

To do this activity, you must have Administrator rights to install and remove software from the laptop or PC.

1. Click **Start**, then click **Control Panel**.

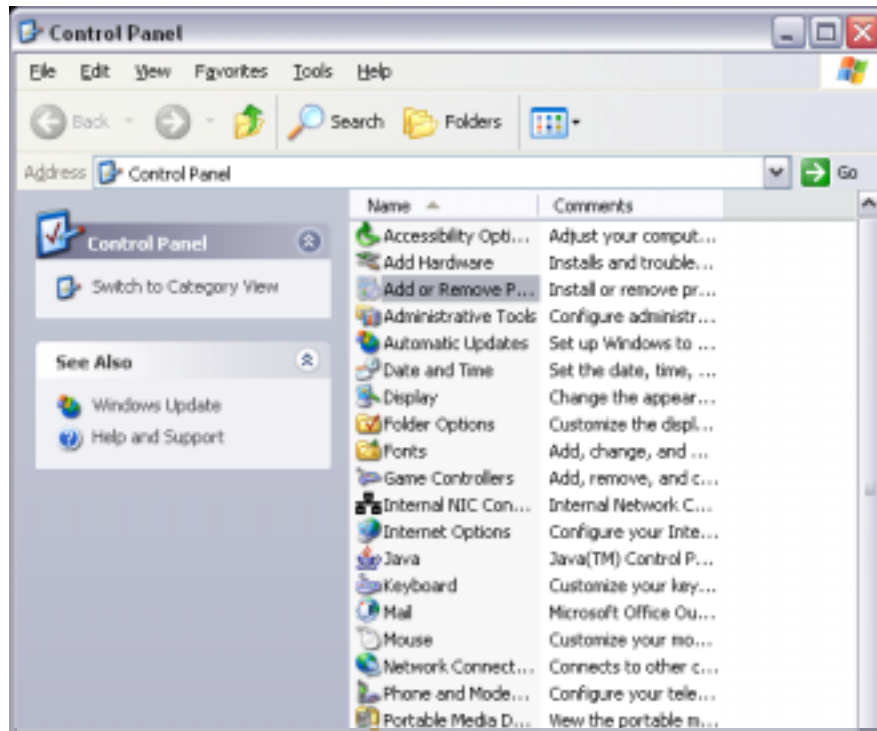


INTRODUCTION TO M-MDS

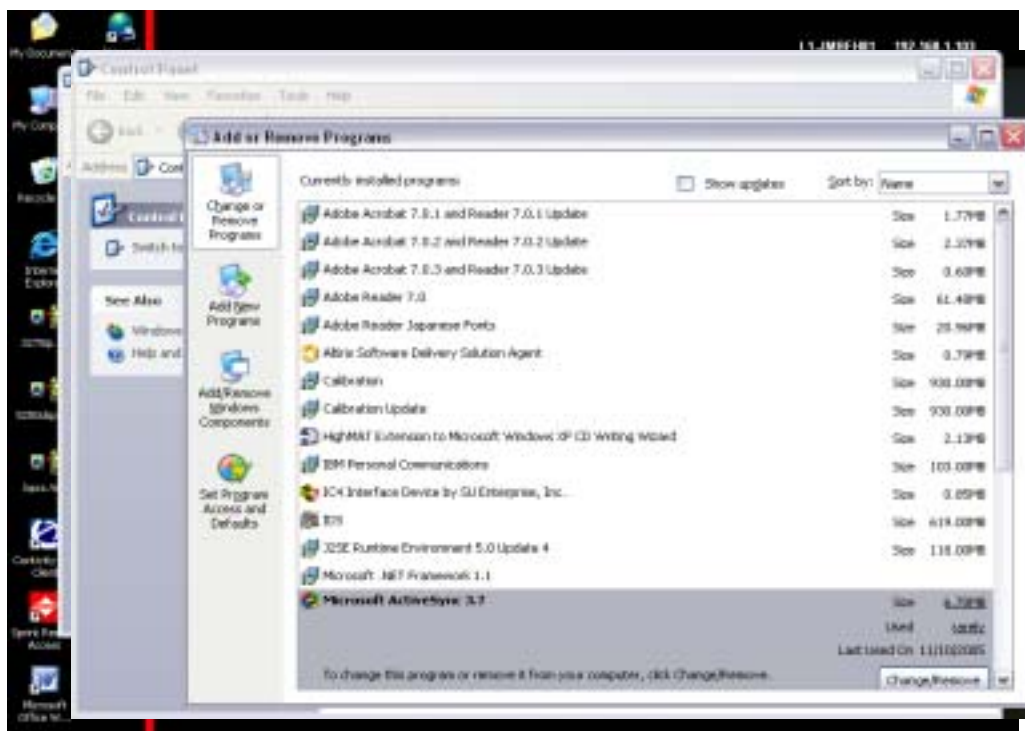
10 - Removing Microsoft ActiveSync

Activity 10 (Continued)

2. Double-click **Add or Remove Programs**.



3. Scroll down the Add or Remove Programs window and click **Microsoft ActiveSync**. Then click the **Change/Remove** button.

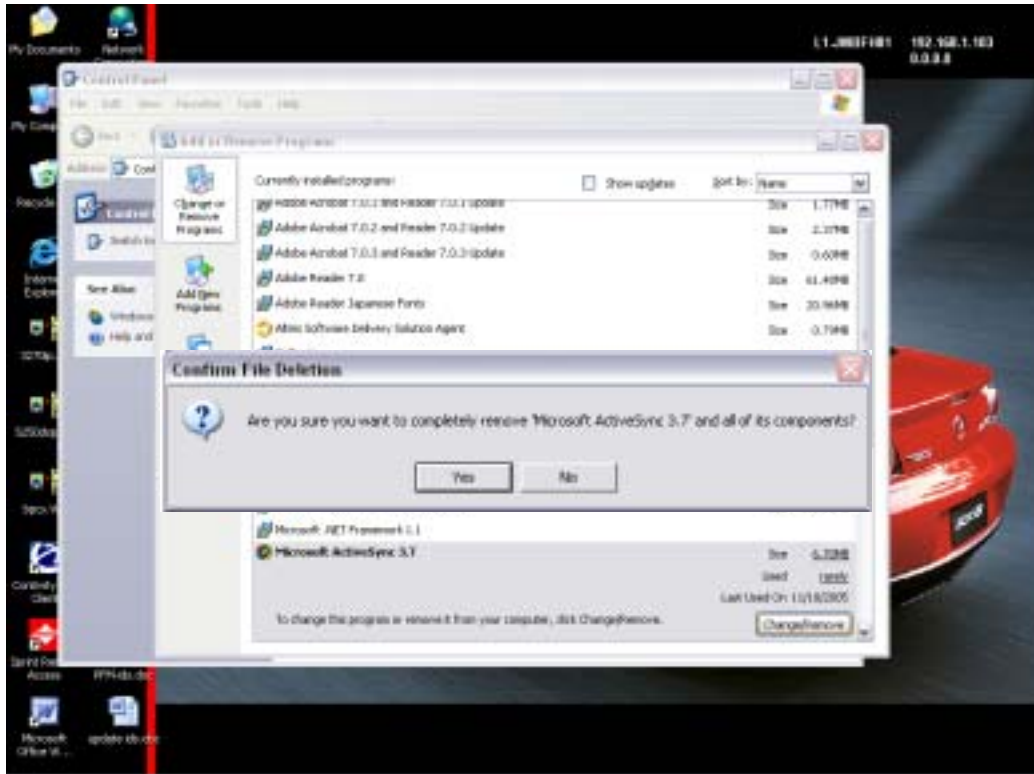


INTRODUCTION TO M-MDS

10 - Removing Microsoft ActiveSync

Activity 10 (Continued)

- Click **YES** on the Confirm File Deletion pop-up message.



- Click **YES** on the Confirm Deletion pop-up message.

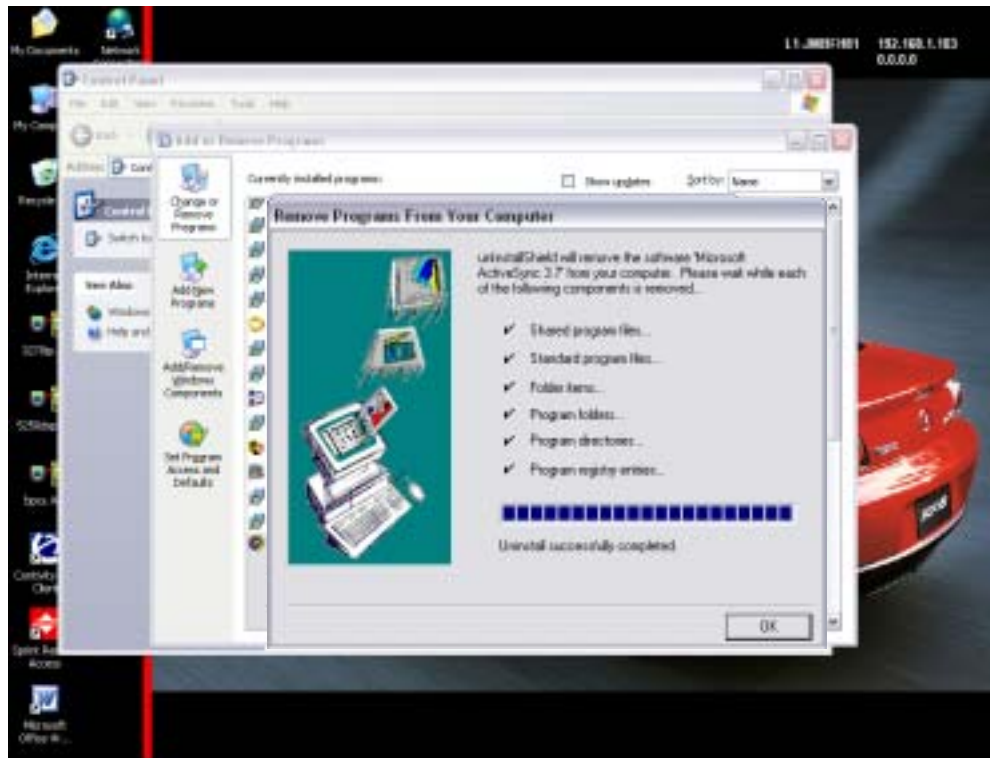


INTRODUCTION TO M-MDS

10 - Removing Microsoft ActiveSync

Activity 10 (Continued)

6. Click **OK** on the Remove Programs from Your Computer window.



7. Click the **X** in the upper right corner of the open windows to get back to the desktop.



INTRODUCTION TO M-MDS

10 - Removing Microsoft ActiveSync

Activity 10 (Continued)

Microsoft ActiveSync is now removed from your laptop or PC.

Conclusion:

In this activity, you removed Microsoft ActiveSync from your laptop or PC.- Continue with Activity 9, Installing Microsoft ActiveSync.

Instructor Sign-off: _____


Activity 11: Updating PDS & PFM

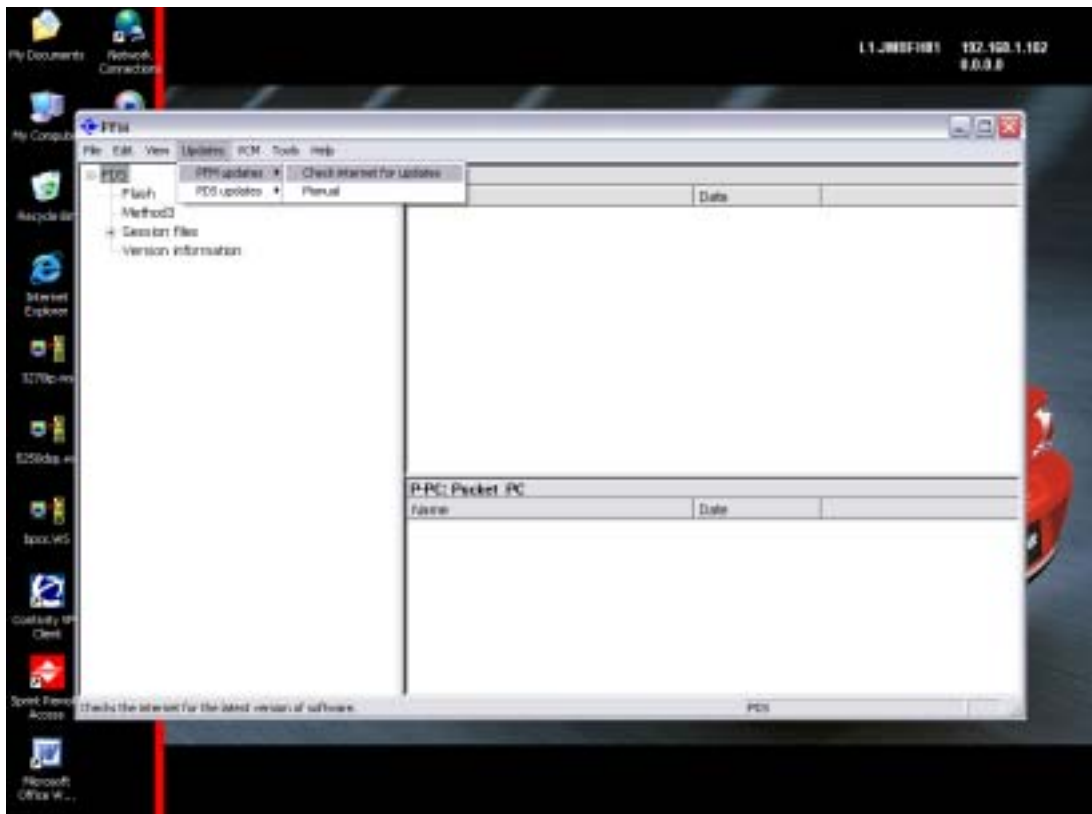
Upon completing this activity you will be able to update PDS from the internet.

What you need to complete this activity:

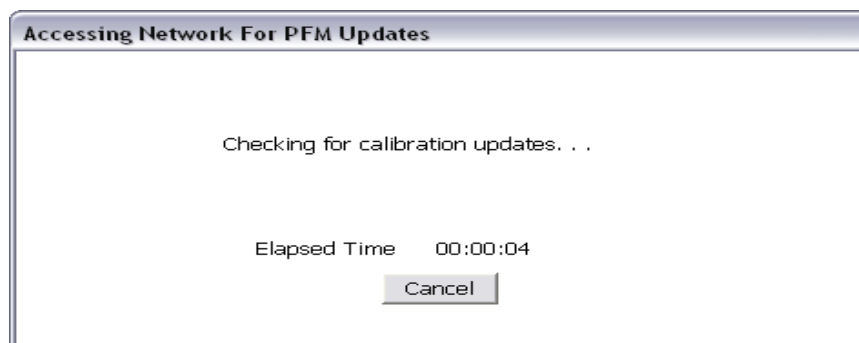
- Mazda-approved laptop or PC with PDS / PFM installed
- High-speed internet access

Procedure:

1. Double-click the PFM icon on the desktop. 
2. Click **Updates**, then **PFM updates**, then **Check internet for updates**.



3. The following screen flashes on then off.

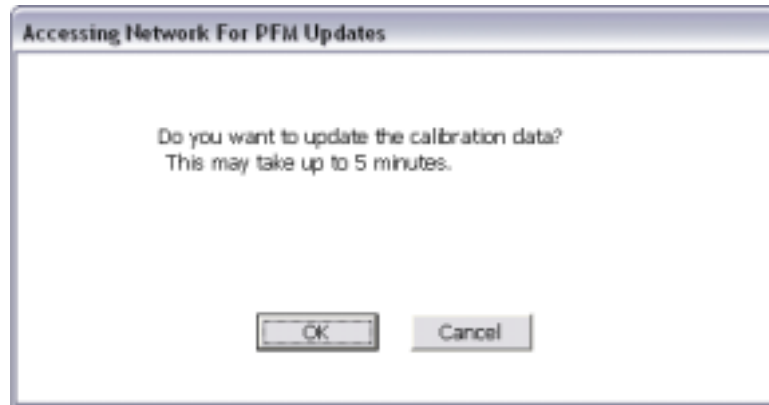


INTRODUCTION TO M-MDS

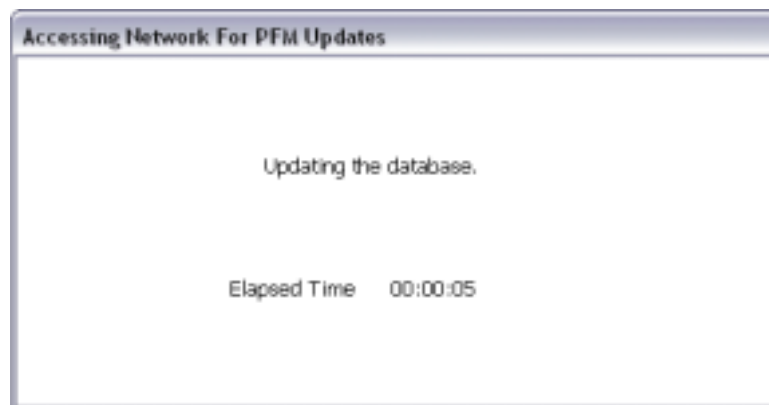
11 - Updating PDS & PFM

Activity 11 (Continued)

- Click **OK**. It usually takes less than 60 seconds to update the calibration data.



- The following screen flashes on then off.



- Click **OK**.

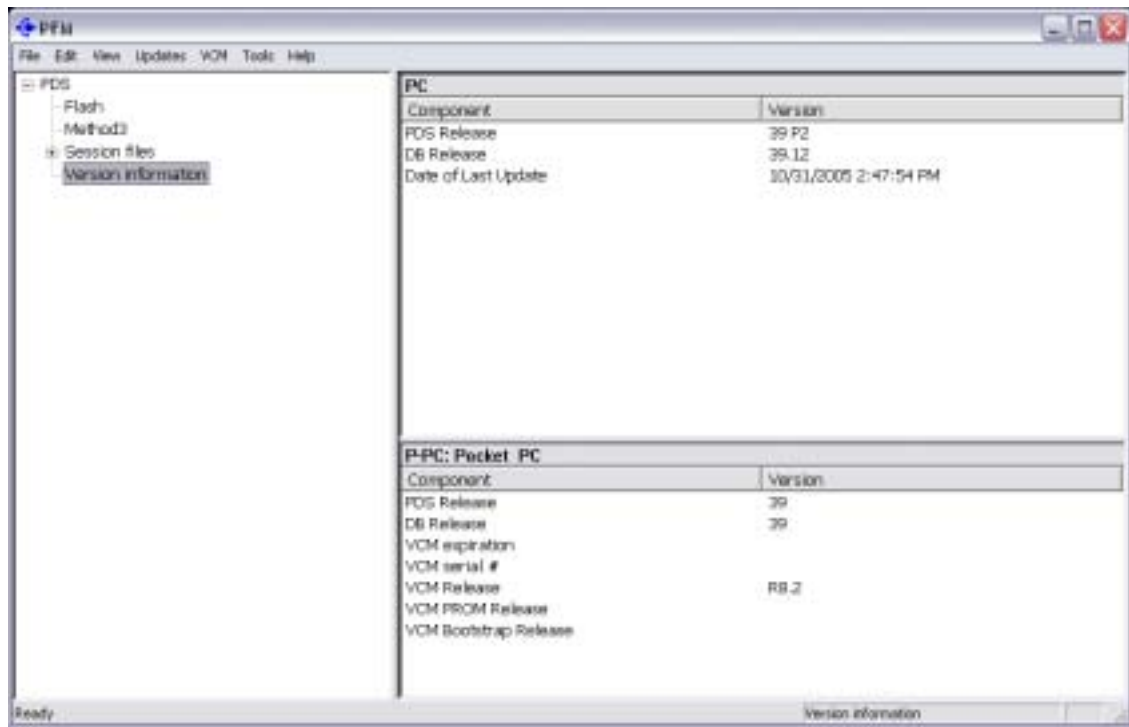


INTRODUCTION TO M-MDS

11 - Updating PDS & PFM

Activity 11 (Continued)

- Click **Version information**. You can see the version information for your Laptop and PDA (if it is in the cradle) on the right side of the screen. Note the difference between the PC and the PDA / P-PC.

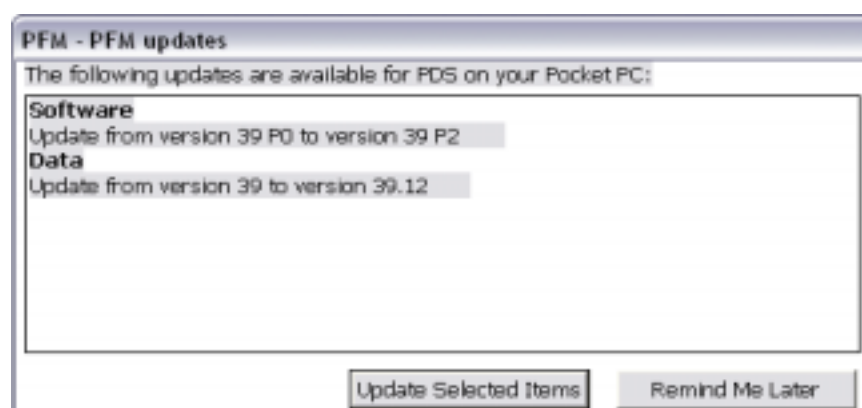


Write the version information from your Laptop / PC: _____

Write the version information from your PDA: _____

- Occasionally you will see the following screen. This screen indicates updates and calibrations are available for PDS.

Click **Update Selected Items**.

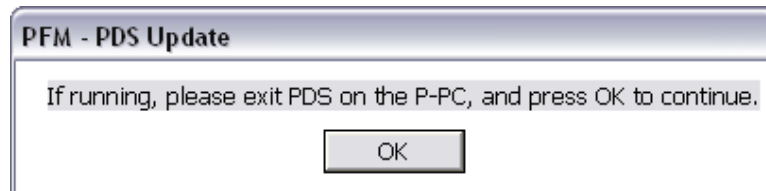


INTRODUCTION TO M-MDS

11 - Updating PDS & PFM

Activity 11 (Continued)

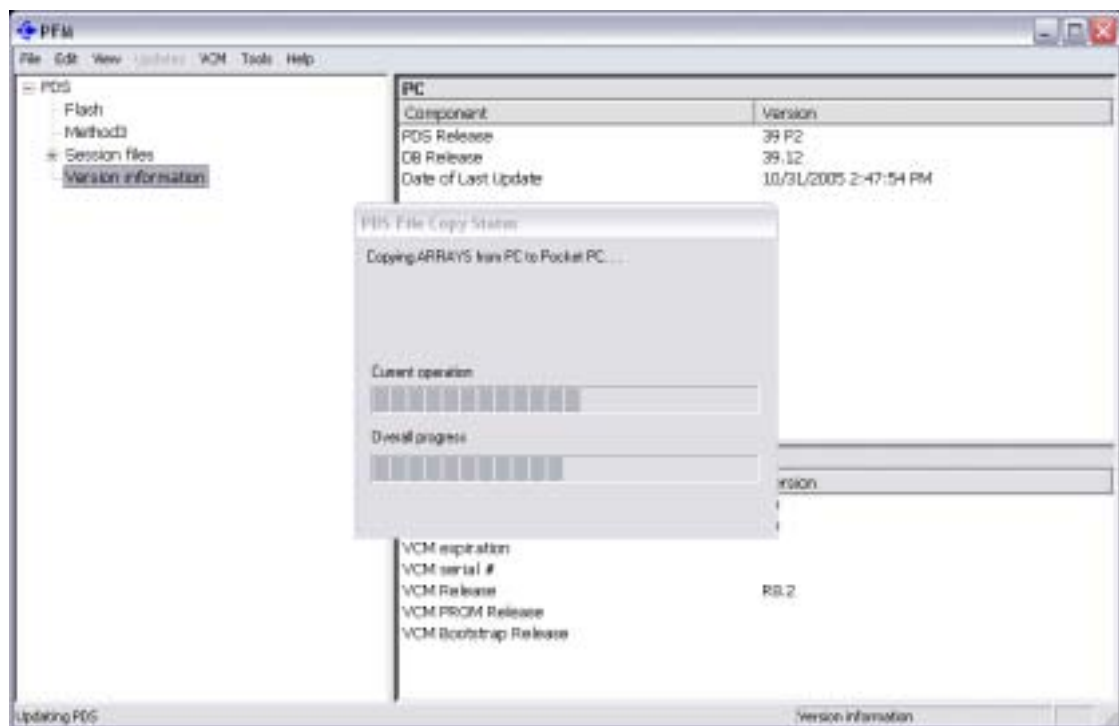
9. Click **OK**.



NOTE

If the above pop-up message displays again, click **OK**.

10. It will take a while to update PDS.

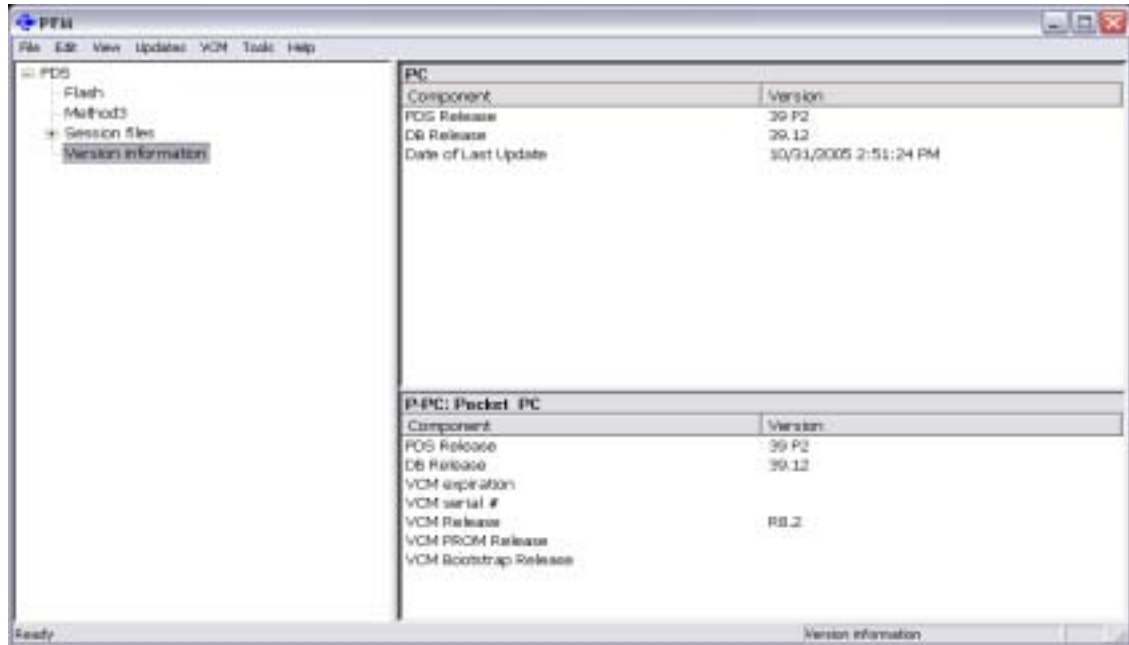


INTRODUCTION TO M-MDS

11 - Updating PDS & PFM

Activity 11 (Continued)

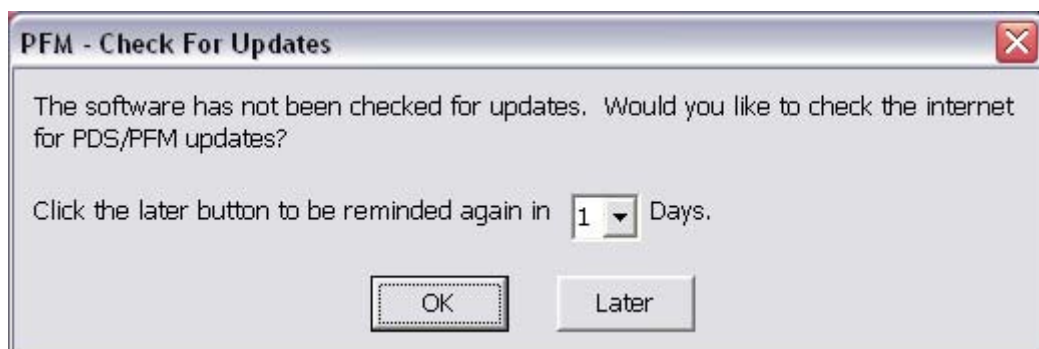
11. The PC and PDA are now at the same update level.



Write the version information from your Laptop / PC: _____

Write the version information from your PDA: _____

12. Occasionally you will see the following screen. If this screen displays, click **OK**. PFM will automatically go to the update screens in steps 10 and 11.



Conclusion:

In this activity, you updated M-MDS from the internet.

Instructor Sign-off: _____